

# Airmatic

## AIR LINE FILTERS

MODEL : A 602 Polycarbonate Bowl  
A 603 Metal Bowl  
Suffix AD-B for Auto Drain

### TEMPERATURE AND PRESSURE RATING

MODEL	BOWL	MAX. PRESSURE	MAX. TEMP.	WITH AUTO DRAIN	
				MAX. PRESSURE	MAX. TEMP.
A602	Poly.	12 Kg/cm <sup>2</sup>	50° C	12 Kg/cm <sup>2</sup>	50° C
A603	Metal	18 Kg/cm <sup>2</sup>	70° C	12 Kg/cm <sup>2</sup>	50° C

**WARNING :** Never use these polycarbonate plastic bowls on air supplied by a compressor lubricated with synthetic oils or oils containing phosphate esters or chlorinated hydrocarbons. They can carry over into the air distribution system and chemically attack and possibly rupture the bowls. On these applications use a metal bowl. Also do not expose these polycarbonate plastic bowl to materials such as carbon tetrachloride, trichloroethylene, acetone, paint thinner cleaning fluids, or other harmful materials, for they too will craze and/or rupture the bowl. If materials harmful to polycarbonate are present either outside or inside the bowl, use a metal bowl.

### INSTALLATION, OPERATING AND MAINTENANCE INSTRUCTIONS

#### INSTALLATION

Before installing filter blow-out pipe line to remove scale and other foreign matter. Filter threads are DRYSEAL not normally requiring pipe compound, however, if desired, apply sparingly and to male threads only. Install filter with bowl vertical in pipe line so that air will flow in direction indicated on filter body. Install as near as possible to equipment serviced and upstream of regulator, lubricator etc.

#### MAINTENANCE

To maintain maximum filtering efficiency and to avoid excessive pressure drop the filter must be kept clean. Open drain cock and drain off any bowl accumulation before it reaches level of bottom baffle.

A visible coating of dirt or condensate on filter element or an excessive pressure drop is an indication that cleaning is necessary.

#### CLEANING

To clean, it is not necessary to remove filter from the line, disassembly is simple and does not require tools. Use the drawing on the reverse side of this sheet as a guide. Clean parts with denatured alcohol and blow out filter body before reassembly. Wash filter elements in kerosene or soap water and blow out from the inside. Clean plastic bowl ONLY with household soap water, NEVER use carbon tetrachloride, trichloroethylene, thinner acetone or similar solvents.

SEE OTHER SIDE FOR REPLACEMENT PARTS LIST.

## AIR PROCESSING PRODUCTS

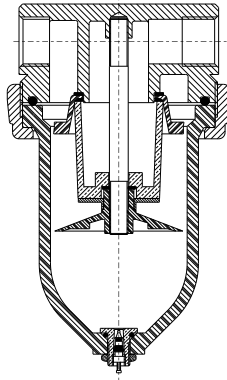
### Shah Pneumatics

Regd. Office : 28-30, Navketan Industrial Estate,  
Mahakali Caves Road, Andheri (East),  
Mumbai - 400 093, INDIA.  
Phone : +91-22-6695 1090, Fax: +91-22-26875317  
E-mail : shahpneu@bom3.vsnl.net.in  
Website : www.shah-pneumatics.com



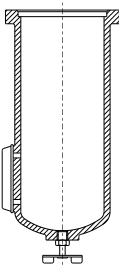
STD FILTERS IOMI.

# MODEL - A602 / A603 REPLACEMENT PARTS ORDER BY SIZE AND KIT NUMBER

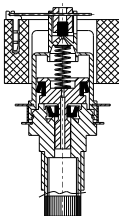


CONSISTS OF PART NAME	KIT NAME	KIT Nos.		
		G1/4-G3/8-G1/2	G3/4-G1-G1.1/2-G2	
Gasket Upper / Lower Filter Element	Element Kit	5 Micron	SFCA-243BP	SFB-345BP
		* 25 Micron	SFCA-243A	SFB-345A
Bowl & Drain Cock	Bowl Replacement Kit	* Plastic	SFA-02	SFLB-08HA
		Metal	SFA-03	SFLB-09
Bowl 'O' Ring + Element Gasket + Drain Cock Assy.	Service Rubber Kit		SFA-O	SFB-O
Drain Cock Assy.	Drain Cock Kit	* Plastic	MFC-09	
		Metal	MFC-09M	

## METAL BOWL ORDER BY : SIZE AND KIT NUMBER



PART NAME	KIT NAME	KIT Nos.	
		G1/4 - G1/2	G3/4 - G2
Bowl with Sight Glass & Drain Cock	Bowl Kit with Sight Glass	SFA-03 SG	SFLB-09 SG
Sight Glass Assy. 'O' Ring and screws	Sight Glass Repair Kit	SFLB-09A	



## INTERNAL AUTO DRAIN - AD-B

PART NAME	KIT NUMBER
Float	ADP-O1
Service Rubber Kit	ADP-O