

Airmatic

REMOTE CONTROL REGULATORS TYPE - 119X20

TEMPERATURE AND PRESSURE RATING

MODEL	MAX. PRESSURE	MAX. TEMP.
A 119 x 20	12 Kg/cm ²	70 Deg C

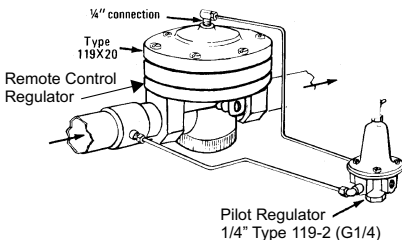
INSTALLATION, OPERATING AND MAINTENANCE INSTRUCTIONS

INSTALLATION

Installation of the 119X20 requires the use of an additional pilot regulator to control the reduced pressure output of the 119X20 unit. A typical installation is shown below where a Airmatic A119-023 regulators is used to furnish the pilot operating supply pressure. With the flexibility provided by this typical installation, the 119X20 regulator may be used in a remote and inaccessible location while the pilot regulator can be placed in a convenient location to control operation of the 119X20 regulator.

Either rigid pipe or flexible tubing may be utilized to connect the 119X20 unit to the pilot regulator.

Before installing, blow out pipe line to remove scale and other foreign matter. This unit has DRYSEAL pipe threads; use pipe compound or tape sparingly to male threads only. Install regulator in pipe line so that air will flow from IN to OUT and as near as possible to equipment being supplied. Connections R and L are normally for gauge use but may be used for outlet purposes in certain applications. To insure troublefree performance a filter(Airmatic Type 602) should be installed upstream of the regulator.



ADJUSTMENT

Since the reduced or regulated pressure is controlled by the pilot regulator, an increase in pilot pressure into the 119X20 unit will produce a corresponding increase in the regulated pressure from the 119X20 regulator. All 119X20 series regulators are of the relieving type design. The system pressure is internally "bled-off" permitting adjustment for lower reduced pressure settings without the necessity of waiting for the air flow to start.

Note :- A small internal constant bleed device permits accurate fine point setting capability. This constant air bleed may be audible and is a perfectly normal characteristic of the regulator.

MAINTENANCE

If the main supply or pilot air supply are kept clean, the regulator should provide long periods of uninterrupted service. Erratic regulator operation or loss of regulation is most always due to dirt accumulating in the disc area. To remedy, clean the regulator as outlined below.

CLEANING

Depressurize, remove bottom plug, spring, strainer and disc. Clean parts with denatured alcohol, wipe off seat and blow out body with compressed air. Reassemble parts as a unit and screw into regulator - before tightening bottom plug make sure disc is in center hole in body.

SEE OTHER SIDE FOR REPLACEMENT PARTS LIST.

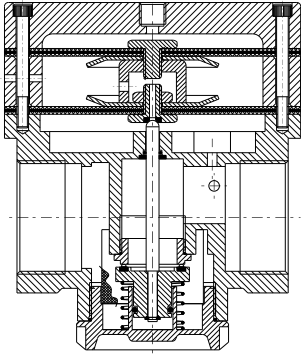
AIR PROCESSING PRODUCTS

Shah Pneumatics

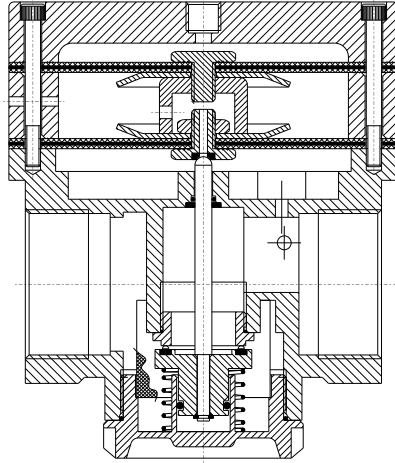
Regd. Office : 28-30, Navketan Industrial Estate,
Mahakali Caves Road, Andheri (East),
Mumbai - 400 093, INDIA.
Phone : +91-22-6695 1090, Fax: +91-22-26875317
E-mail : shahpneu@bom3.vsnl.net.in
Website : www.shah-pneumatics.com



MODEL - 119X20 REPLACEMENT PARTS ORDER BY SIZE AND KIT NUMBER



G1/4- G3/8-G1/2



G3/4- G1-G1.1/4-G1.1/2-G2

CONSISTS OF PART NAME	KIT NAME	SIZE / KIT No.				
		6mm-10mm-15mm	20mm-25mm	40mm	50mm	65mm-80mm
		G1/4 - G3/8 - G1/2	G3/4 - G1	G1.1/4 - G1.1/2	G2	(G2.1/2) - (G3)
Diaphragm Assy.	Diaphragm Assy Kit	Top (Pilot) # Bottom (Relieving)	SRC-04NR SRA-07P	SRB-04P SRB-04R	SRB-04P SRB-04R	SRB-04P SRB-04R
Stem Assy. with 'O' Ring	Stem Assy. Kit		SRC-06 SRA-11	SRB-08 SRB-08A	SRB-08A SRB-04R	SRC-24
Stainer	Strainer Kit		- SRA-17	SRB-17	SRC-17	-
Bottom Plug 'O' Ring	Bottom Plug 'O' Ring Kit		SRC-10 SRA-09	SRB-06	SRB-06A	SFCA-03
Diaphragm Assy. (Pilot) Diaphragm Assy. (Regulator) Stem Assy. Bottom Plug 'O' Ring	Service Kit	* Relieving Non Relieving	SPRA-O-R SPRA-O-NR	SPRB-O-R SPRB-O-NR	SPRC-O-R SPRC-O-NR	

STANDARD