

# Airmatic

## DRIP LEG DRAIN

MODEL : D10 (Polycarbonate Bowl)  
D11 (Metal Bowl)

### TEMPERATURE AND PRESSURE RATING

SIZE	MODEL	MAX. PRESSURE	MAX. TEMP.
G ½	Plastic Bowl	12 Kg/Cm <sup>2</sup>	50°C
	Metal Bowl	12Kg/Cm <sup>2</sup>	50°C

**WARNING :** Never use these polycarbonate plastic bowls on air supplied by a compressor lubricated with synthetic oils or oils containing phosphate esters or chlorinated hydrocarbons. They can carry over into the air distribution system and chemically attack and possibly rupture the bowls. On these applications use a metal bowl. Also do not expose these polycarbonate plastic bowl to materials such as carbon tetrachloride, trichloroethylene, acetone, paint thinner cleaning fluids, or other harmful materials, for they too will craze and/or rupture the bowl. If materials harmful to polycarbonate are present either outside or inside the bowl, use a metal bowl.

### INSTALLATION, OPERATING AND MAINTENANCE INSTRUCTIONS

#### INSTALLATION

Before installing, blow-out pipe line to remove scale and other foreign matter. This unit has DRYSEAL pipe threads; use pipe compound or tape sparingly to male threads only.

Remove the Disc Assembly and the float. Carefully breakaway the interference fit between the black plastic housing and the brass body and remove the piston and spring. Clean all component parts thoroughly with soapy water or alcohol and clean or replace all seals as necessary. Insure that the small orifice in the housing and piston are not clogged. Carefully re-assemble all parts positioning them as Shown on reverse side of this instruction sheet.

#### MAINTENANCE-CLEANING

**NOTE :** To clean, it is not necessary to remove item from line. Refer to drawing on reverse side as guide in reassembly. To clean, depressurize air line and remove bowl. Follow drawing provided on reverse for disassembly and reassembly. Blow out body with compressed air. **CLEAN BOWL ONLY WITH HOUSEHOLD SOAP.** Remove the auto-drain assembly from the drip leg bowl and clean or replace the screen. Disassemble the lever actuation mechanism by snapping lever out of the plastic retainer on float and remove the pin.

## AIR PROCESSING PRODUCTS

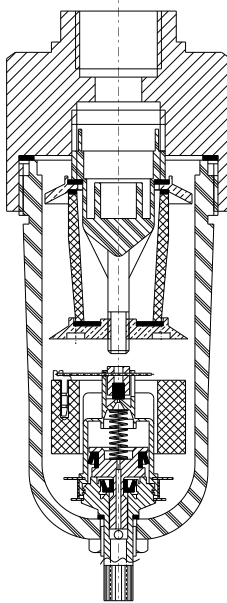
### Shah Pneumatics

Regd. Office : 28-30, Navketan Industrial Estate,  
Mahakali Caves Road, Andheri (East),  
Mumbai - 400 093, INDIA.  
Phone : +91-22-6695 1090, Fax: +91-22-26875317  
E-mail : shahpneu@bom3.vsnl.net.in  
Website : www.shah-pneumatics.com



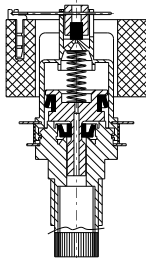
DRIP LEG DRAIN (OMI)

# MODEL - D 10 / D11 REPLACEMENT PARTS



CONSISTS OF PART NAME	KIT NAME	SIZE / KIT No.
Bowl without D/C	Bowl Replacement Kit	* Plastic DFC-01H
		Metal DFLC-01M
Gasket Upper / Lower Filter Element	Element Kit	25 Micron DFC-347A
Complete Internal AutoDrain	AutoDrain Assy.	Plastic AD-M
Gasket Upper / Lower Bowl 'O'Ring	Service Kit	DF-0D

\* Standard



## INTERNAL AUTO DRAIN

PART NAME	KIT NUMBER
Float	ADP-O1
Service Rubber Kit	ADP-O