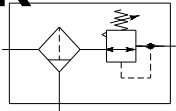


INSTRUMENT FILTER REGULATOR



SERVICE : GASES OR COMPRESSED AIR

APPLICATIONS

Designs as a compact unit to filter and then reduce air or gas in order to deliver a clean and constant supply of operating medium pressure to pilot controllers, valve positioners, pneumatic instruments. Filter regulator body and bottom cover are aluminum die castings. The filter has a free area of 12 times the pipe area. Brass drain valve is furnished at bottom of 4 ½ cubic cms accumulators. An internal relief valve, increases controllability in low flow situations, relieve reduce pressure should it exceed spring setting by 0.07 Kg/cm² (1 PSI).

Technical Data

Material Specification

Body	Die cast Aluminium
Bowl	Die Cast Aluminium
Element	Sintered Polypropylene / Bronze optional
Valve Stem	St. Steel bonded with nitrile / Neoprene seat
Diaphragm	Canvas Impregnated Nitrile / Neoprene Optional
Valve Spring	Stainless Steel
Spring Cage	Diecast Aluminium
Drain	Brass/ St. Steel Optional

Standard Features

Diaphragm	Relieving
Pressure Range	0.35 - 2.4 kg/cm ² (5 - 35 PSIG)
Gauge port	G1/4
Element Rating	25 Micron
Drain	Manual

Flow Rate

SPRING RANGE Kg/cm ² (PSI)	OUTLET PRESSURE Kg/cm ² (PSI)	Maximum capacity CFH free air at reduced range with 10% droop factor.		
		Inlet pressure Kg/cm ² (PSI)		
		3.4 (50)	6.8 (100)	17(250)
0.3 - 2.4 (5 to 35)	1.7 (25)	400	750	1400
2 - 4 (30 to 60)	2.7 (40)	125	450	1400
3.7 - 6.8 (55 to 100)	5.4 (80)	-	350	900

Maximum CV - 0.28

Features

- * **Compactness** - The small size of 67 series combination makes them particularly useful in installations having space limitations.
- * **Ease Of Maintenance** - No special tools are required to service these combinations and they need not be removed from line when servicing and repair are necessary.
- * **Filtration Action** - Internal filter helps clean impurities from process fluid, removing particles that might damage the regulator or down stream equipment.
- * **Smooth, close regulation and High stability** - Combination design isolates the diaphragm and pressure response chambers from the main flow stream.

Airmatic



Condition of use

Max. Supply Pressure	17 Kg/cm ² (250 PSIG)
Max. Op. Temperature	+5°C - +80°C

Accessories & Options

		SUFFIX
Mounting Bolt		MK
Round Knob		RK
Pressure Gauge 55mm Dial (G1/4) Back Connection	Range 0 - 2.1 Kg/cm ²	GB-1
	0 - 4.2 Kg/cm ²	GB-2
	0 - 10.6 Kg/cm ²	GB-3
	0 - 21 Kg/cm ²	GB-4

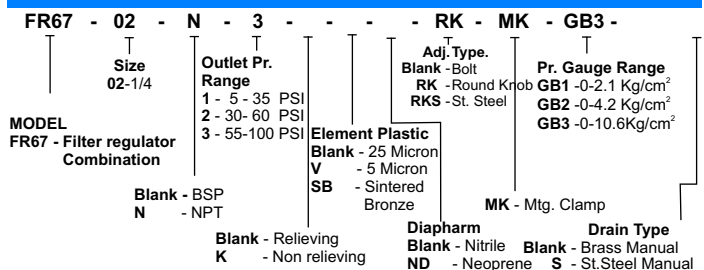
Installation

Provided with a bolting flange so that the unit can be easily mounted.

Sizes - Numbers

Available only in 1/4" - inlet and outlet connections NPT/BSPT/BSP.
*NPT Standard

Model Ordering Code Instruction



Dimensions & Weights

SIZE - G1/4 / 1/4 NPT	
Weight	700 gms
Overall Height	With sq. Head adjustment 240mm
Width	81 mm
Face to Face	81 mm

Shah Pneumatics

28-30, NAVKETAN IND. ESTATE, MAHAKALI CAVES ROAD, ANDHERI - (E), MUMBAI-400093, INDIA.
Ph:- +91-22-6695 1090-94, Fax:- +91-22-2687 5317,
E-mail:- shahpneu@bom3.vsnl.net.in
Website : www.shah-pneumatics.com

FR67 COMBINATION CAT.