

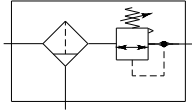
AIR LINE INTEGRAL FILTER-REGULATOR

STANDARD SERIES

SERVICE : AIR

Filter-Regulator Combinations

- High flow capacity with minimum pressure drop requirements.
- For application requiring constant pressure with wide variation in flow.
- Two stage air cleaning action
 - 1) Cyclonic separation
 - 2) Depth style filter element



Technical Data

Material Specification

Body	Aluminium
Plastic Bowl	Polycarbonate
Element	Porous Material
Seals	Buna -N
Trim	Brass / St. Steel on request
Diaphragm	Buna -N Impregnated *
Spring Pressure	Spring Steel Zn plated
Spring Valve	Stainless Steel
Spring Cage (Bonnet)	Diecast Aluminium

* Optional Neoprene \ Viton Diaphragm

Standard Features

Type	Diaphragm, Relieving
Pressure Range	0 - 9 Kg/cm ²
Gauge ports	Two (G1/4)
Element Rating	25 Micron
Drain	Manual

Reduced Pressure Range

- Available in four reduced Pressure ranges suffix.
1. for 0 to 2 kg/cm²
 2. for 0 to 4 kg/cm²
 3. for 0 to 9 kg/cm²
 4. for 0 to 15 kg/cm²
- * Unless otherwise specified. 0-9 Kg/cm² (0-125) will be supplied.

Ordering References

MODEL	SIZES							
	G1/4		G3/8		G1/2		G3/4	
	Non Rel.	Rel.	Non Rel.	Rel.	Non Rel.	Rel.	Non Rel.	Rel.
Plastic Bowl	A 618-02	A 619-02	A 618-03	A 619-03	A 618-04	A 619-04	A 618-06	A 619-06
Metal Bowl	A 620-02	A 621-02	A 620-03	A 621-03	A 620-04	A 621-04	A 620-06	A 621-06
Flow in SCFM	60	60	70	70	80	80	80	80

Typical flow rate 7.0 Kg/cm²(100 psig) with 1.0 Kg/cm² (14.7 psig) Δp

Service Kits

KIT NAME	SIZES/KIT NUMBERS		
	G1/4 - G1/2	G3/4	
Service Kit	Relieving	SC-OR	SC-OAR
	Non Relieving	SC-ONR	SC-ONAR
Element Kit	5 Micron Plastic	SFCA-243V	
	Sintered Bronze	SFCA-243V-SB	
	25 Micron Plastic	SFCA-243A	
	Sintered Bronze	SFCA-243A-SB	
Bowl Replacement Kit	Plastic	SCA-01NHA	
	Metal	SCA-02HA	
Diaphragm Assy. Kit	Relieving	SRC-04R	
	Non Relieving	SRC-04NR	

Airmatic



Condition of use

	Polycarbonate Bowl	Metal Bowl
Max. Supply Pressure	12 Kg/cm ²	18 Kg/cm ²
Max. Op. Temperature	50°C	70°C
Bowl Capacity	210 ml	300 ml

Accessories & Options

		SUFFIX
Filter Element	5µ Sintered Bronze	V-SB
	50µ Sintered Bronze	H-SB
	25µ Sintered Bronze	SB
Stainless Steel Trim		SS
Metal Bowl	Relieving	Replace 619 with 621
	Non Relieving	Replace 618 with 620
Mounting Bracket		BC
Round Knob		RK
Pressure Gauge 55mm Dial (G1/4) Back Connection	Range 0 - 2.1 Kg/cm ²	GB-1
	0 - 4.2 Kg/cm ²	GB-2
	0 - 10.6 Kg/cm ²	GB-3
	0 - 21 Kg/cm ²	GB-4
Float - Automatic Drain Assembly		ADM
Drain (Stainless Steel)		D2
Sight Glass (Metal Bowl Only)		SG

Performance Data

See charts at A119 high capacity regulators for flow curves.

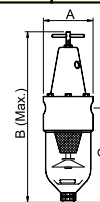
Model Ordering Code Instruction

A619 - 04 - 3 - -P-RK-BC-GB-3 - -SG-SS

Model - Std. FR-Combination	Size	Diaphragm Blank	P-Panel Mtg.	BC-Mtg. Bkt.	Drain Type	SS-St. Steel Trim
619 - Polycarbonate Bowl Relieving	02-G1/4	BUNA N			PD - Plastic Manual	
621 - Metal Bowl Relieving	03-G3/8	VD - Viton			ADM - Auto	
618 - Polycarbonate Bowl Non Relieving	04-G1/2	ND - Neoprene		RK-Round Knob		SG-Sight Glass (Metal Bowl)
620 - Metal Bowl Non Relieving	06-G3/4					
Outlet Pr. Range	Element Type	Pr. Gauge Range				
1 - 0-2 Kg/cm ²	Blank - 25 M Plastic	GB-1-0-2.1 Kg/cm ²				
2 - 0-4 Kg/cm ²	V-SB - 5M Sint. Bronze	GB-2-0-4.2 Kg/cm ²				
3 - 0-9 Kg/cm ²	H-SB - 50M Sint. Bronze	GB-3-0-10.6 Kg/cm ²				
4 - 0-15 Kg/cm ²	SB - 25M Sint. Bronze	GB-4-0-21 Kg/cm ²				

Dimensions & Weights

SIZE	G1/4	G3/8	G1/2	G3/4
A		76		80
B		295		305
C		157		161
Weight Kgs.	Poly.	0.985	0.975	0.960
	Metal	1.115	1.110	1.095



ALL DIMENSIONS ARE IN MM.

STD FR COMBINATION CAT.