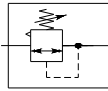


AIR LINE REGULATORS

MIDI SERIES

SERVICE :- AIR / GASES / WATER



Regulator

- High Flow Capacity
- Compact in size, suitable for OEM application
- Diaphragm Design

Technical Data

Material Specification

Body	Diecast Zinc
Spring Cage	Diecast Aluminium
Diaphragm & Seat	Buna N *
Bottom Plug	Black Anodise Aluminium
Spring	Pressure Spring Steel / Zn plated
Valve	St. Steel

* Optional Neoprene / Viton on request.

Standard Features

Diaphragm Type	Relieving
Reduced Pressure Range	0 to 9 Kg/cm ²
Gauge Ports	Two (G1/4)
Adjusting Screw	Tee

Ordering Reference

	SIZES		
	G1/4	G3/8	G3/8
MODELS	R13-023	R13-033	R13-043
Flow in scfm	40	65	100

Typical flow rate at 7 Kg/cm² (100 psig) with 1 Kg/cm² (14.7 psig) Δ p

Service Kits

Service Kit	Relieving	DR-OR
	Non Relieving	DR-ONR
Diaphragm Assy. Kit	Relieving	DRC-04R
	Non Relieving	DRC-04NR

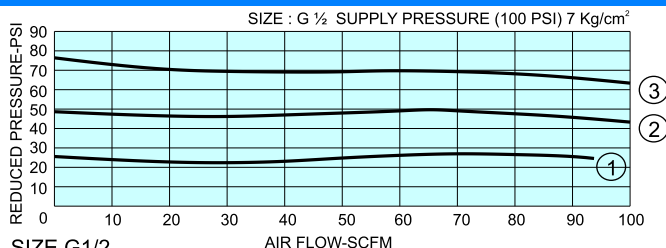
Reduced Pressure Range

Available in four reduced pressure ranges : suffix

1. for 0 - 2 kg/cm²
2. for 0 - 4 kg/cm²
- * 3. for 0 - 9 kg/cm²
4. for 0 - 15 kg/cm²

* Unless otherwise specified. 0-9 Kg/cm² (0-125 PSI) will be supplied.

Pressure Drop Curve



SIZE G1/2

Minimum over pressure for actuation - 6 PSI
Relief capacity at 15 PSI over pressure - 3 SCFM

Airmatic



Condition of use

Maximum Supply Pressure	18 Kg/cm ²
Maximum Op. Temperature	70°C

Accessories & Options

SUFFIX		
Panel Mounting Ring	PB	
Round Knob	RK	
Mounting Bracket	BB	
Non Relieving Regulator	A	
Pressure Gauge 55mm Dial G1/4 Back Connection	Range 0 to 2.1 Kg/cm ²	GB-1
	0 to 4.2 Kg/cm ²	GB-2
	0 to 10.6 Kg/cm ²	GB-3
	0 to 21 Kg/cm ²	GB-4

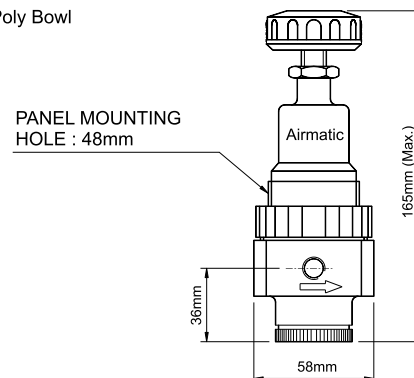
Model Ordering Code Instruction

R	-	13	-	02	-	3	-	-	-	PB	-	RK	-	BB	-	GB-3
Type		Outlet Pr. Range		Diaphragm		Conn.		Blank-Relieving		Panel Mtg. Ring		Round Knob		Mtg. Bkt.		Pr. Gauge Range
Midi Regulator		1 - 0-2 Kg/cm ² 2 - 0-4 Kg/cm ² 3 - 0-9 Kg/cm ²		Blank-Buna N ND -Neoprene VD -Viton		N - NPT Blank - BSP		A-Non Relieving								GB1 - 0-2.1Kg/cm ² GB2 - 0-4.2Kg/cm ² GB3 - 0-10.6Kg/cm ² GB4 - 0-21Kg/cm ²
13 - Metal Bonnet		Sizes														
02 - G1/4		04 - G1/2														

Dimensions & Weights

SIZE	G1/4	G3/8	G1/2
Wt. in Kgs.*	0.640	0.620	0.610

* Poly Bowl



MIDI REGULATOR CAT.