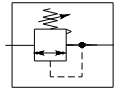


## AIR LINE REGULATORS

### STANDARD SERIES

SERVICE : AIR / GAS / WATER



### Regulators

- High Flow Capacity
- Rugged Diaphragm Design
- For application requiring constant pressure with wide variation in flow

## Technical Data

### Material Specification

Body	Diecast zinc / Aluminium Alloy	
Spring Cage (Bonnet)	Diecast Aluminium	
Diaphragm	Buna N Impregnated *	
Spring	Pressure	Zinc Plated Steel
	Valve	Stainless Steel
Bottom Plug	Brass	
Seals	Buna - N	
Trim Assy.	Brass / St.Steel on request	

\* Optional Neoprene / Viton Diaphragm.

### Standard Features

Type	Diaphragm, Relieving
Outlet Pressure Range Adj.	0 to 9 Kg/cm <sup>2</sup>
Gauge Ports	Two (G1/4)

### Ordering Reference

SIZES	G1/4	G3/8	G1/2	G3/4	G1	G1.1/4	G1.1/2	G2
Non Relieving	A 118-02	A 118-03	A 118-04	A 118-06	A 118-08	A 118-10	A 118-12	A 118-16
Relieving	A119-02	A119-03	A119-04	A119-06	A119-08	A119-10	A119-12	A119-16
Flow in SCFM	60	70	80	380	380	400	450	600

Typical flow at 7 kg/cm<sup>2</sup> (100 psi) with 1 kg/cm<sup>2</sup> (14.7 psi) Δp

### Service Kits

		G1/4-G1/2	G3/4-G1	G1.1/4-G1.1/2	G2
Service Kit	Relieving	SR-OR	SRA-OR	SRB-OR	SRB-ORA
	Non Relieving	SR-ONR	SRA-ONR	SRB-ONR	SRB-OANR
Diaphragm Assy. Kit	Relieving	SRC-04R	SRA-07R	SRB-04R	SRB-04R
	Non Relieving	SRC-04NR	SRA-07NR	SRB-04NR	SRB-04NR

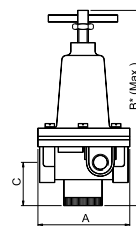
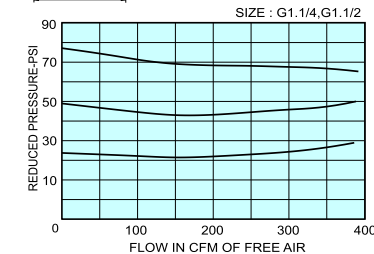
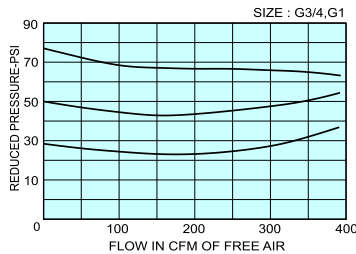
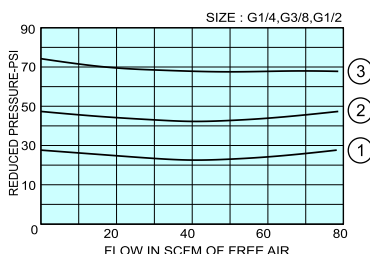
### Reduced Pressure Range

Available in four reduced Pressure ranges suffix.

1. for 0 to 2 kg/cm<sup>2</sup>
2. for 0 to 4 kg/cm<sup>2</sup>
- \* 3. for 0 to 9 kg/cm<sup>2</sup>
4. for 0 to 15 kg/cm<sup>2</sup>

\* Unless otherwise specified. 0-9 Kg/cm<sup>2</sup> (0-125) will be supplied.

### Flow Curves



ALL DIMENSIONS ARE IN MM.

STD REGULATOR CAT.



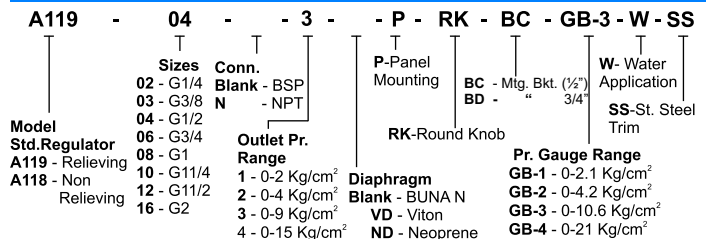
### Condition of use

Maximum Supply Pressure	18 Kg/cm <sup>2</sup>
Maximum Op. Temperature	75°C

### Accessories & Options

		SUFFIX
Panel Mounting		P
Mounting Bracket	G1/4 - G1/2	BC
	G3/4 - G1	BD
Round Knob		RK
Trim (St. Steel)		SS
Pressure Gauge 55mm Dial G1/4 Back Connection	Range 0 to 2.1 Kg/cm <sup>2</sup>	GB-1
	0 to 4.2 Kg/cm <sup>2</sup>	GB-2
	0 to 10.6 Kg/cm <sup>2</sup>	GB-3
	0 to 21 Kg/cm <sup>2</sup>	GB-4
Water application		W

### Model Ordering Code Instruction



### Dimensions & Weights

SIZE	G1/4	G3/8	G1/2	G3/4	G1	G1.1/4	G1.1/2	G2
	DIMENSIONS (MM)							
A	72		118		144		137	
B	170		265		300		310	
C	33		48		56		70	
Wt. in Kgs.	0.815	0.815	0.780	2.210	2.190	4.000	3.700	4.180