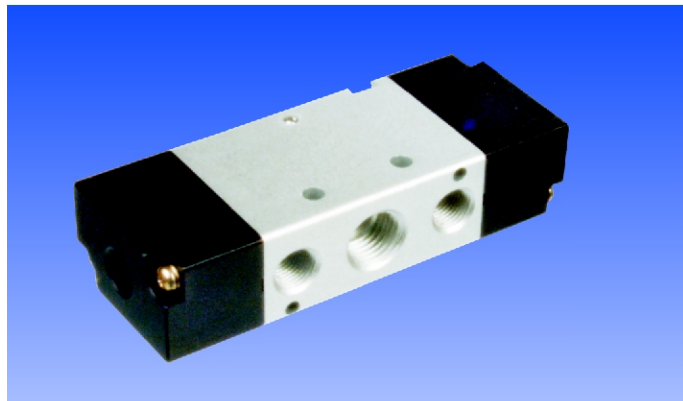


DIRECTIONAL CONTROL VALVES

5/2, 5/3 - PILOT OPERATED

TYPE : PP252-5/2 WAY,
PPH253-5/3 WAY
DOUBLE PILOT VALVE



Application

These valves are used in applications requiring air operated control. Also known as bistable valve is controlled by both side air signals & retains its position even after signal cut off. In case of 5/3 valve same is spring centred & returns to neutral position when no pilot signals are applied.

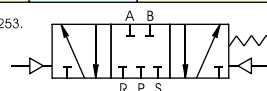
FOR DRY OR LUBRICATED AIR & INERT GASES.

Ordering References

| Port Sizes | Orifice mm ² | Flow Lpm | CV | Pilot Size | Model / Reference No # |
|------------|-------------------------|----------|----|------------|------------------------|
|------------|-------------------------|----------|----|------------|------------------------|

MODEL :- PP 252-5/2 way
PPH 253-5/3 way

Type PPE/PPH253.



Type PP 252.



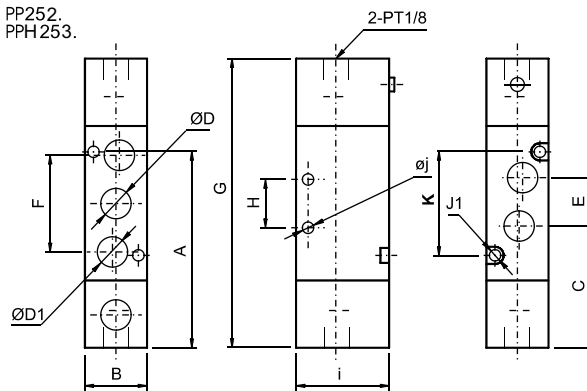
Aluminium Body

| Port Size | Orifice mm ² | Flow Lpm | CV | Pilot Size | Model / Reference No # |
|-----------|-------------------------|----------|------|------------|------------------------|
| G1/8 | 12 | 600 | 0.67 | G1/8 | PP 252-01-800-A-N |
| | 9 | | 0.50 | | PP 253-01-800-A-N |
| G1/4 | 16 | 800 | 0.89 | G1/8 | PP 252-02-800-A-N |
| | 12 | | 0.67 | | PP 253-02-800-A-N |
| G3/8 | 30 | 1200 | 1.67 | G1/8 | PP 252-03-800-A-N |
| | 18 | | 1.00 | | PP 253-03-800-A-N |
| G1/2 | 50 | 2000 | 2.79 | G1/8 | PP 252-04-800-A-N |
| | 30 | | 1.68 | | PP 253-04-800-A-N |

consult the technical sales department for manifold details

Dimensions

Type PP252.
PPH253.



Material Specification

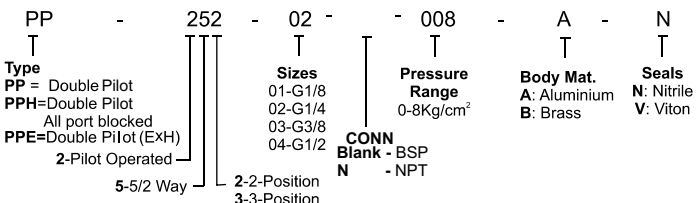
| | |
|--------------|--------------------------|
| Body | Aluminium optional Brass |
| Internals | Aluminium |
| Sealing Disc | Nitrile |

Condition of use

| | |
|----------------------------|--------------------------|
| Minimum Operating Pressure | 1.5 Kg/Cm ² g |
| Maximum Operating Pressure | 8 Kg/Cm ² g |
| Minimum Pilot Pressure | 1.5 Kg/Cm ² g |
| Max. Operating Temp. | 60° C |

PPE=Double Pilot (ExH)

Model Ordering Code Instruction



ORDER CODE : PP 252-02-008-A-N

| MODELS | DIMENSIONS-MM | | | | | | | | | | | WEIGHTS | | |
|------------|---------------|----|------|------|------|----|----|-----|----|----|-----|---------|-------|-------|
| | A | B | C | D | D1 | E | F | G | H | I | J | | J1 | K |
| PP-252-01 | 54.5 | 18 | 32.5 | G1/8 | G1/8 | 16 | 28 | 81 | 14 | 27 | 3.3 | 30 | 0.120 | |
| PPH-253-01 | | | | | | | | 96 | | | | | 0.200 | |
| PP-252-02 | | | | | | | | 92 | | | | | 0.220 | |
| PPH-253-02 | 64 | 22 | 35.5 | G1/4 | G1/8 | 21 | 36 | 111 | 20 | 35 | 4.3 | 3.2 | 38 | 0.400 |
| PP-252-03 | | | | | | | | 111 | | | | | | 0.310 |
| PPH-253-03 | 78 | 27 | 43.5 | G3/8 | G1/4 | 24 | 45 | 130 | 24 | 40 | 4.3 | 50 | 0.540 | |
| PP-252-04 | | | | | | | | 142 | | | | | | 0.590 |
| PPH-253-04 | 103 | 34 | 53 | G1/2 | G1/2 | 63 | 63 | 163 | 28 | 50 | 5.5 | 4.3 | 72 | 0.770 |

DIMENSIONS ARE IN mm.

Shah Pneumatics

Regd. Office : 28-30, Navketan Industrial Estate,
Mahakali Caves Road, Andheri (East),
Mumbai - 400 093, INDIA.

Phone : +91-22-6695 1090 Fax : +91-22-26875317
E-mail : shahpneu@bom3.vsnl.net.in
Website : www.shah-pneumatics.com