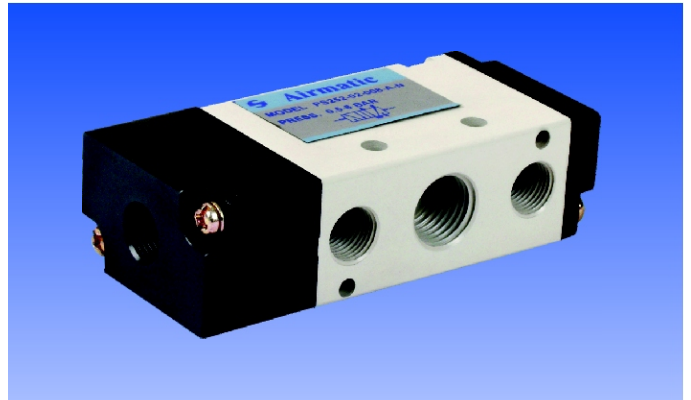


DIRECTIONAL CONTROL VALVES 3/2, 5/2 - PILOT OPERATED TYPE : PS231-3/2 WAY, PS252-5/2 WAY SINGLE PILOT SPRING RETURN



Application

When the air signal is given to the pilot port valve is actuated. It remains actuated until the signal is cut off & returns to normal position by spring force.

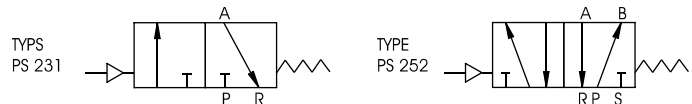
FOR DRY OR LUBRICATED AIR & INERT GASES.

Ordering References

Port Sizes	Orifice mm ²	Flow		Pilot Port	Model Reference No #
		Lpm	CV		

MODEL :- PS 231 3/2 WAY (N.C.)
PS 252 5/2 WAY

Aluminium Body

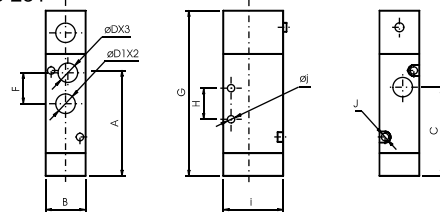


Port Sizes	Orifice mm ²	Flow Lpm	Flow CV	Pilot Port	Model Reference No #
G 1/8	12	800	0.67	G 1/8	PS 231-01-008-A-N-*
					PS 252-01-008-A-N-*
G 1/4	16	1100	0.89	G 1/8	PS 231-02-008-A-N-*
					PS 252-02-008-A-N-*
G 3/8	30	2000	1.67	G 1/8	PS 231-03-008-A-N-*
					PS 252-03-008-A-N-*
G 1/2	50	3300	2.79	G 1/8	PS 252-04-008-A-N-*

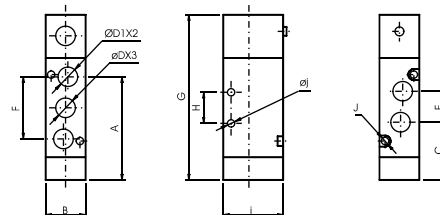
Consult the technical sales department for manifold details.

Dimensions

TYPE : PS 231



TYPE : PS 252



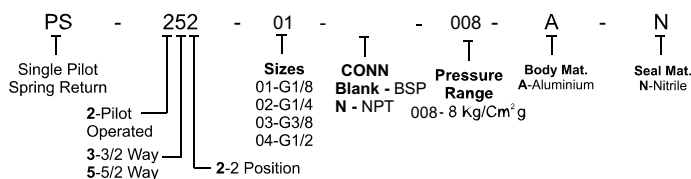
Material Specification

Body	Aluminium optional Brass
Internals	Aluminium
Seals	Standard Nitrile Optional Viton

Condition of use

Minimum Operating Pressure	1.5 Kg/Cm ² g
Maximum Operating Pressure	8 Kg/Cm ² g
Minimum Pilot Pressure	2 Kg/Cm ² g
Max. Operating Temp.	60° C

Model Ordering Code Instruction



ORDER CODE : PS252-01-008-A-N

MODEL	DIMENSIONS											WEIGHTS			
	A	B	C	D	D1	E	F	G	H	I	J		J1	K	
PS 231-01	30	23	-	16	56.5	21	-	16	28	68.7	14	27	3.3	30	0.120
PS 252-01	42.2	18	20.2	G1/8	M5	16	28	68.7	14	27	3.3	30	0.120	30	0.120
PS 231-02	38.5	22	27.5	G1/4	G1/8	-	22.5	70	25	35	4.3	3.2	30	-	38
PS 252-02	49.7	22	21.2	G1/4	G1/8	21	36	77.7	20	40	4.3	3.2	30	0.220	38
PS 231-03	44.5	27	32.5	G3/8	G1/4	-	24	80.5	30	40	4.3	3.2	35	-	50
PS 252-03	62.5	27	28	G3/8	G1/4	24	45	95.5	24	50	5.5	4.3	50	0.310	72
PS 252-04	88.5	34	39	G1/2	G1/2	36	63	128	28	50	5.5	4.3	72	0.590	72

ALL DIMENSIONS ARE IN MM.

Shah Pneumatics

Regd. Office : 28-30, Navketan Industrial Estate,
Mahakali Caves Road, Andheri (East),
Mumbai - 400 093, INDIA.

Phone : +91-22-6695 1090 Fax : +91-22-26875317
E-mail : shahpneu@bom3.vsnl.net.in

Website : www.shah-pneumatics.com