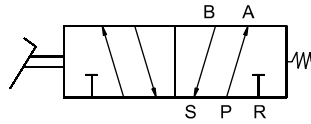


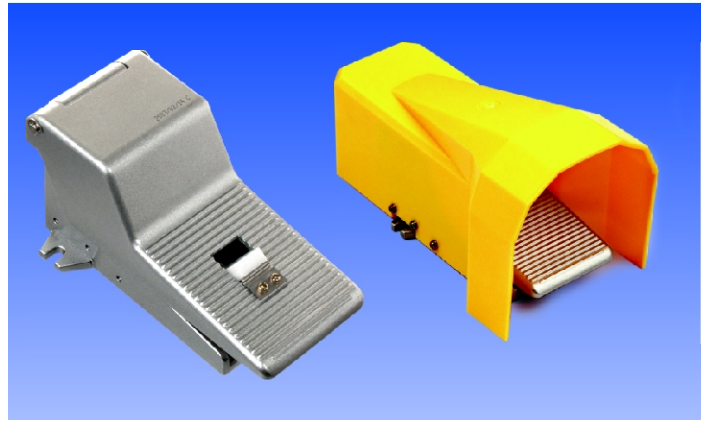
FOOT PADEL VALVES

MODELS : FS-152 (5/2)

SERVICE : AIR



Airmatic



Application

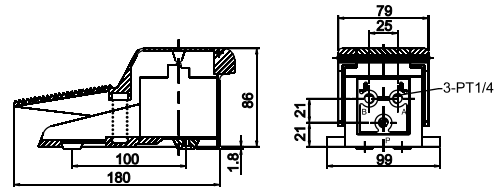
Airmatic directional control valves are available in four versions, standard, valve with lock, valve with guard and valve with lock & guard, applications where operator prefers to have hands free operation.

Material Specification

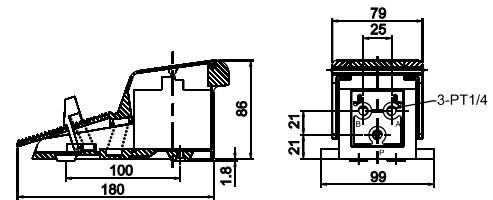
Body	Aluminium
Seals	Nitrile

Dimensions

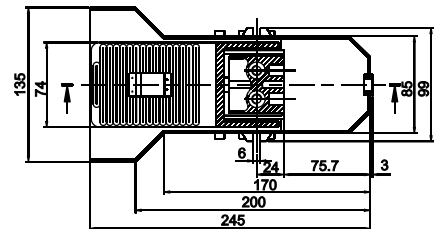
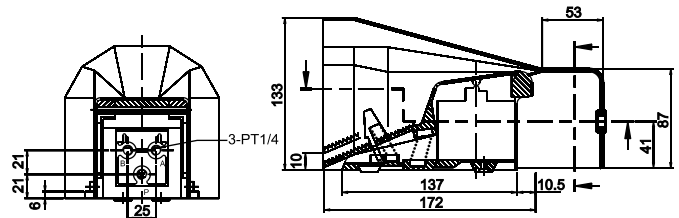
BASIC



LOCK



LOCK WITH GUARD



ALL DIMENSIONS ARE IN MM.

Condition of use

Max. Supply Pressure	8 Kg/cm ²
Temperature Range	0-60 ⁰

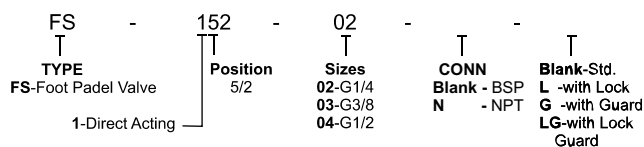
Ordering Reference

MODELS	SIZES	TYPE
FS-152-02	G1/4	Basic
FS-152-02-L		Lock
FS-152-02-G		Guard
FS-152-02-GL		Lock and Guard

Features

- Non-corrosive materials are used on all operating parts exposed to the working fluid.
- Valves may be mounted in any position.

Model Ordering Code Instruction



ORDER CODE : FS - 152 - 02 - G

Shah Pneumatics

Regd. Office : 28-30, Navketan Industrial Estate,
Mahakali Caves Road, Andheri (East),
Mumbai - 400 093, INDIA.
Phone : +91-22-6695 1090 Fax : +91-22-26875317
E-mail : shahpneu@bom3.vsnl.net.in
Website : www.shah-pneumatics.com

DIR-CONTROL-VALVE 3-2-5-2 P-OPERATED-S-CAT.