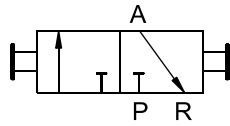


HAND SLIDE VALVES

MODELS : HSV 131

SERVICE : AIR / GASES



Application

These valves can be used at the inlet of pneumatic tools like grinders, screwdrivers, etc. Pneumatic systems and near machines using pneumatics, for quick and easy connecting / disconnecting of compressed air.

Technical Data

Material Specification

Body	Aluminium
Seals	Nitrile

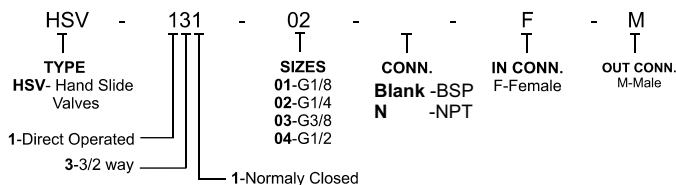
Ordering References

MODELS	PORT SIZES	ORIFICE	
		mm ²	CV
HSV-01	G1/8	23	1.28
HSV-02	G1/4	40	2.2
HSV-03	G3/8	62	3.5
HSV-04	G1/2	140	7.8
HSV-06	G3/4	250	13.8
HSV-08	G1	392	21.78

Features

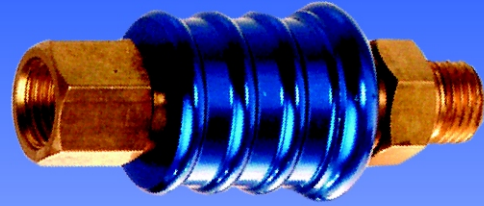
- Full port orifice.
- High flow capacity.
- Positive shut-off leak proof.
- Low operation torque.
- 100% factory tested.

Model Ordering Code Instruction



ORDER CODE : HSV-131-02-F-M

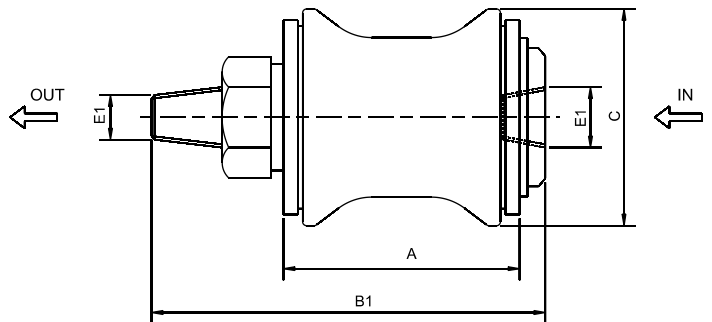
Airmatic



Condition of use

Max. Supply Pressure	10 Kg/cm ²
Temperature Range	5-60 ⁰

Dimensions



MODELS	A	B1	C	D	E1
HSV01	30	50	27.5	17	1/8"
HSV02	32.5	58	30	19	1/4"
HSV03	39	68.5	35.5	22	3/8"
HSV04	50	85.5	44	30	1/2"
HSV06	58	96.5	53.5	36	3/4"
HSV08	70	114.5	65.5	44	1"

ALL DIMENSIONS ARE IN MM.

Shah Pneumatics

Regd. Office : 28-30, Navketan Industrial Estate,
Mahakali Caves Road, Andheri (East),
Mumbai - 400 093, INDIA.
Phone : +91-22-6695 1090 Fax : +91-22-26875317
E-mail : shahpneu@bom3.vsnl.net.in
Website : www.shah-pneumatics.com

DIR-CONTROL-VALVE 3-2-5-2 P-OPERATED-S-CAT.