

# EXHAUST SILENCERS / MUFFLERS

# Airmatic

**MODELS : ES / EM**

**SERVICE : AIR & GASES**

## Application

“Slim line” silencers / mufflers give you superior performance in noise reduction from control valves with minimum back pressure. The robust and compact design allows location in the tightest places without extra piping. Fits directly into the exhaust port of widely available valves.

Noise pollution on the job has been recognised as a major health hazard. It can cause irritation and fatigue, and in some cases is a contributing factor to accidents. Studies have shown that workers subjected to high noise show a decrease in working efficiency and output.

## Technical Data

### Material Specification

Body	M.S. Powder Coated/Brass/Plastic
Element	Wire mesh or Sintered Material

### Condition of use

Max. Supply Pressure	12 Kg/cm <sup>2</sup>
Temperature Range	+ 20 <sup>0</sup> C to + 70 <sup>0</sup> C

### Features

- Slim line, Non-corrosive, light in weight.
- Minimum flow Restriction.
- Can be cleaned with many common solvents.
- Compactness - The small size of silencer makes them particularly useful in installations having space limitations.

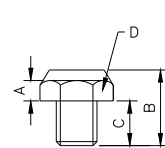
### Model Ordering Code Instruction

ES	-	02	-	-	B
ES-Exhaust Silencer		<b>Sizes</b>		<b>CONN</b>	<b>Type</b>
EM-Exhaust Mufflers		05- M5		Blank- BSP	B -Sintered Bronze
		01-G1/8		N -NPT	W -Wire mesh
		02-G1/4			PL-Plastic
		03-G3/8			V -Disc Sintered
		04-G1/2			
		06-G3/4			
		08-G1			
		12-G1.1/2			



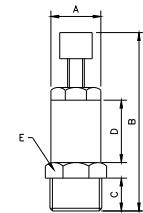
## Sizes - Models & Dimensions

### SINTERED SILENCERS (DISC)



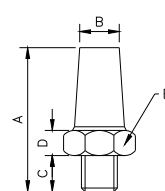
MODEL	PIPE SIZES	DIMENSIONS-(mm)			
		A	B	C	D
ES-M5-V	M5	2.5	9.3	5.5	9
ES-01-V	G1/8	3.5	11.0	6.2	12
ES-02-V	G1/4	4.5	14.8	8.7	15
ES-03-V	G3/8	4.5	15.8	8.7	19
ES-04-V	G1/2	5.2	18.6	11.2	22

### EXHAUST MUFFLERS



MODEL	PIPE SIZES	DIMENSIONS-(mm)				
		A	B	C	D	E
EM-01-B	G1/8	12	34.3	6.3	12	12
EM-02-B	G1/4	14	39.0	7.5	10	14
EM-03-B	G3/8	17	46.0	7.5	15	17
EM-04-B	G1/2	24	57.5	9.5	23	24

### SINTERED SILENCERS



MODEL	PIPE SIZES	DIMENSIONS-(mm)				
		A	B	C	D	E
ES-01-B	G1/8	24	7.5	6	4	12
ES-02-B	G1/4	30	9.0	8	5	15
ES-03-B	G3/8	39	12	10	5	19
ES-04-B	G1/2	46	15	11	5.5	22
ES-06-B	G3/4	56	20	11.5	7	27
ES-08-B	G1	63	21	15.5	8.5	36

## Shah Pneumatics

Regd. Office : 28-30, Navketan Industrial Estate,  
Mahakali Caves Road, Andheri (East),  
Mumbai - 400 093, INDIA.  
Phone : +91-22-6695 1090 Fax : +91-22-26875317  
E-mail : shahpneu@bom3.vsnl.net.in  
Website : www.shah-pneumatics.com

EXHAUST SILENCER CAT.

Order Code : ES - O2 - PL