

MANIFOLDS

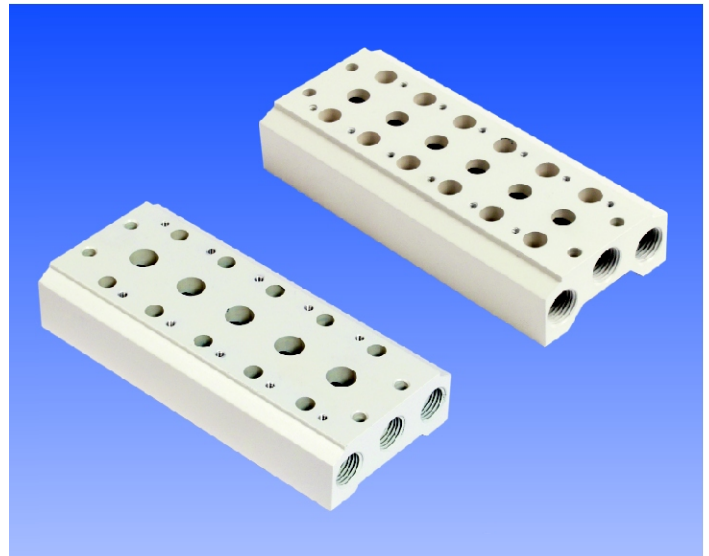
MODEL :- MT SERIES

Suitable for **SS 252, PS 252 SERIES**
SS 231, PS 232 SERIES

Directional Control Valves

Airmatic valve manifolds are easy to choose & assemble at customers place. Common input exhaust & both side porting adds to flexibility in connections. Din rail mounting brackets can easily be fitted due to provision kept on rear side.

Airmatic



Model Order Code for Valve Manifolds

MT	-	252	-	02	-	06
↓		↓		↓		↓
TYPE		231 - 3/2 NC		Sizes/Models		No of Valves or Stations
MANIFOLD		232 - 3/2 NO		01 : G1/8 Valve		02-2 Station
		252 - 5/2		02 : G1/4 Valve		03-3 Station
				03 : G3/8 Valve		04-4 Station
				04 : G1/2 Valve		05-5 Station
						06-6 Station
						07-7 Station

ORDER CODE : MT 252 - 02 - 06

Model Order code for Blanking Plates

MB	-	252	-	01
↓		↓		↓
MB -Blanking Plate for Manifold		For		Types/ Sizes
		231 - 3/2 NC		01 - G1/8 Series
		232 - 3/2 NO		02 - G1/4 Series
		252 - 5/2		03 - G3/8 Series
				04 - G1/2 Series

Refer Dimension L&P from 5/2 table for SS 231 232

Type/Item	A	E	F	G	H	R	T	V	X
MT01-XX	38	4.2	18.3	19	5	19	19	9	25
MT02-XX	44.5	4.3	22.4	23	6	22.5	22.2	9.5	25
MT03-XX	51	4.5	27.3	27	6	24	50.5	13	31.5

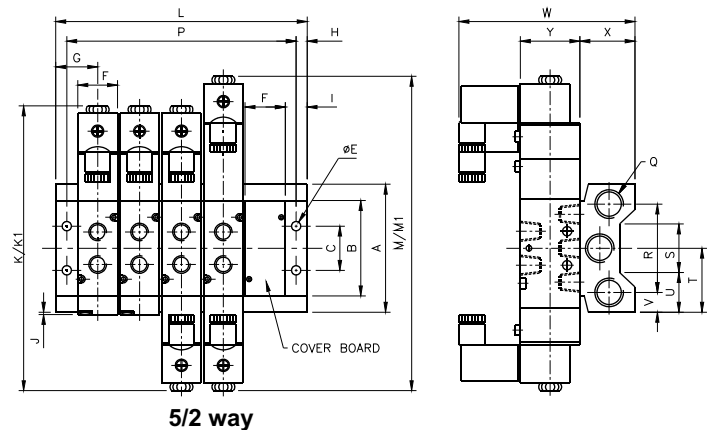
For SS 252 / PS 252

Type/Item	A	B	C	E	F	G	H	I	J	K	K1	L															
												NO OF VALVES															
												1	2	3	4	5	6	7	8	9	10	11	12	13	14	15	16
MT01-XX	58	43.2	20	4.2	18.3	19	5	9.9	0.8	139.4	68.7	38	57	76	95	114	133	152	171	190	209	228	247	266	285	304	323
MT02-XX	61	50.7	21	4.3	22.4	23	6	11.8	1.2	170	77.7	46	69	92	115	138	161	184	207	230	253	276	299	322	345	368	391
MT03-XX	75	64.8	26	4.5	27.3	27	6	13.4	2.5	189	95.5	54	82	110	138	166	194	222	250	278	306	334	362	390	418	446	474
MT04-XX	104	94.5	32	5.5	34.3	31.5	7	18.4	5	222	128	71	98	133	168	203	238	273	308	343	378	413	448	483	518	553	588

Type/Item	M	M1	P																Q	R	S	T	U	V	W	X	Y
			NO OF VALVES																								
			1	2	3	4	5	6	7	8	9	10	11	12	13	14	15	16									
MT01-XX	155.	96	28	47	66	85	104	123	142	161	180	199	218	237	256	275	294	313	PT1/4	40	30	29	14	9	78.5	25	27
MT02-XX	189	111	34	57	80	103	126	149	172	195	218	241	264	287	310	333	356	379	PT1/4	43	32	30.5	14.5	9	92.5	26	35
MT03-XX	208	130	42	70	98	126	154	182	210	238	266	294	322	350	378	406	434	462	PT3/8	53	48	37.5	13.5	11	99	30	40
MT04-XX	243	163	57	84	119	154	189	224	259	294	329	364	399	434	469	504	539	574	PT1/2	68	67	52	18.5	18	112	38	50

ALL DIMENSIONS ARE IN MM

Dimensions



5/2 way

Shah Pneumatics

Regd. Office : 28-30, Navketan Industrial Estate,
 Mahakali Caves Road, Andheri (East),
 Mumbai - 400 093, INDIA.
 Phone : +91-22-6695 1090 Fax : +91-22-26875317
 E-mail : shahpneu@bom3.vsnl.net.in
 Website : www.shah-pneumatics.com

MANIFOLD S-MT SERIES FOR VALVES