

GLOBE VALVES

2/2 INTERNAL PILOT OPERATED

TYPE : SS 121 ST

SOLENOID/PILOT OPERATED SPRING RETURN

Application

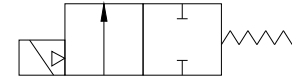
These globe valves are suitable for pressure & vacuum applications demanding high flow requirements. They provide optimum flow performance without leakage. Unique seat design makes them resistant to particulate in fluid media & steam.

SUITABLE FOR AIR, WATER AND OIL & STEAM

Port Sizes	Orifice in mm	CV Value	Admissible Pressure Range Kg/Cm ²		Max. Admissible Fluid Temp °C	Seal Material	Model/Ref. No			
			Min.	Max.			Valve	Coil	Plug	Voltage AC / DC

MODEL : 121ST Normally Closed

Brass Body / Pipe Mounting



Port Size	Orifice (mm)	CV	Min. Pressure (Kg/Cm ²)	Max. Pressure (Kg/Cm ²)	Temp. (°C)	Seal	Model/Ref. No	Class	Watts	Lead Wire	Weight (Kg)
G1/2	17	4.8	1	15	5 TO 180°C	PTFE	SS 121 ST-04-002-B-T	AF (F Class)	24	LAW Lead Wire 15" Long	110
G3/4	17	4.8	1	15			SS 121 ST-06-002-B-T				
G1	22	12	1	15			SS 121 ST-08-002-B-T				
G1.1/2	30	20	1	15			SS 121 ST-12-001-B-T				
G2	50	48	1	15			SS 121 ST-16-001-B-T				

Material Specification

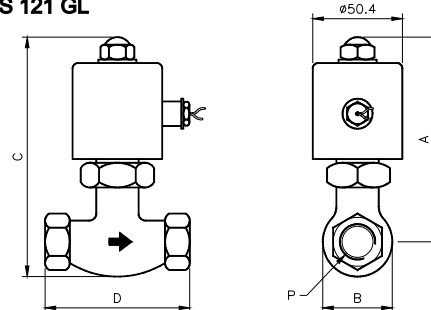
Body	Brass
Internals	SS 304/410 / Aluminium
Sealing Disc	PTFE

Technical Specification

RESPONSE TIME	0.25 secs.
MAX. WORKING FREQUENCY	2 Cycle / Sec.
ELECTRICAL CONNECTION	LEAD WIRE
CONNECTION	Lead wire 15 Inches Long
DUTY CYCLE/ INSULATION	100% ED / Class F
VISSOSITY LIMIT	Under 20 CST

Dimensions

TYPE : SS 121 GL



PORT SIZES	DIMENSIONS				WEIGHT IN Kgs.
	P	A	B	D	
G 1/2	125	42	146	82	0.850
G 3/4	125	42	146	82	1.150
G 1	135	52	185	91	1.200
G 1.1/4	147	74	183	111	2.500
G 1.1/2	147	74	183	111	2.500
G 2	176	86	223	163	3.000

DIMENSIONS ARE IN MM.

Shah Pneumatics

Regd. Office : 28-30, Navketan Industrial Estate, Mahakali Caves Road, Andheri (East), Mumbai - 400 093, INDIA.
 Phone : +91-22-6695 1090 Fax : +91-22-26875317
 E-mail : shahpneu@bom3.vsnl.net.in
 Website : www.shah-pneumatics.com

Model Ordering Code Instruction

S 221 ST - 04 - 015 - B - T - A F 24 - LAW - 220V AC.
 T SS-Single Solenoid 1-NC High Temp. 2-Direct Operated 2-2/2 Way
 Blank - BSP NPT Body Mat. Seals B-Brass T-PTFE Coil Type A Watts 24 Lead Coil Voltage 220V 110V 24V AC DC
 Sizes 04-G1/2 06-G3/4 08-G1 12-G1.1/2 16-G2 Pressure Range 0-15 Kg/Cm² Class F - F Class

ORDER CODE : S221ST-04-015-B-T-AF24-LAW-220VAC.

