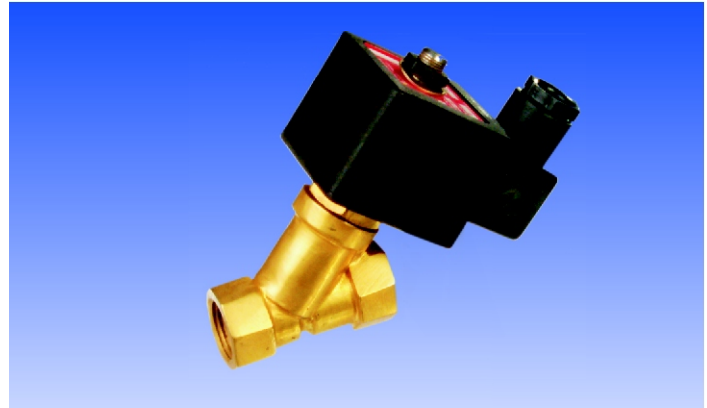


SOLENOID VALVES

2/2 DIRECT OPERATED ANGLE SERIES

TYPE : SS 121Y

SOLENOID OPERATED SPRING RETURN VALVES



Application

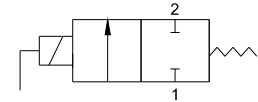
These valves are suitable for applications demanding high flow & low response time through a direct acting valve. The inclined seating provides excellent flow characteristics without leakage.

FOR WATER AND FLUID APPLICATIONS

Port Sizes	Orifice in mm	Nominal Flow Lpm	Admissible Pressure Range Kg/Cm ²			Max. Admissible Fluid Temp. °C			Wattage		Model/Ref. No			
			Min.	DC	Max. AC	Air	Water	Oil	DC	AC	Valve*	Coil	Plug	Voltage AC / DC

MODEL :- SS 121Y

Brass Body/ Pipe Mounting



Port Size	Orifice (mm)	Flow (Lpm)	Min. Pressure (kg/cm ²)	Max. Pressure (kg/cm ²)		Air Temp. (°C)	Water Temp. (°C)	Oil Temp. (°C)	Wattage		Valve Model	Coil Model	Plug Model	Voltage (V)
				DC	AC				DC	AC				
G3/8	8.5	1800	0	0.4	1.5	100	100	100	8	8	SS121Y-03-XX-B-N	BF8	PB	12
				-	4.5				14	14				24
	9.5	2200	0	0.3	1.0				8	8				110
				-	3.0				14	14				220
G1/2	8.5	1800	0	0.4	1.5	101	100	100	8	8	SS121Y-04-XX-B-N	BF14	PBL	110
				-	4.5				14	14				220
	9.5	2200	0	0.3	1				8	8				110
				-	3				14	14				220

* PLEASE REFER MODEL ORDERING CODE INSTRUCTION

Material Specifications

Body	Brass / St. Steel304
Internals	SS 304/410
Seals	Nitrile Optional Viton

Technical Specifications

Response Time	0.025 sec.
Max. Working Frequency	4-5 cycles / Sec.
Voltage Fluctuation	+/- 10%
Electrical Connection	DIN Plug Connection
Plug Connector	PB : Standard, PBL : with led
Duty Cycle/Insulation	100% ED/ Class F Std.
Degree of Protection	Standard IP 65

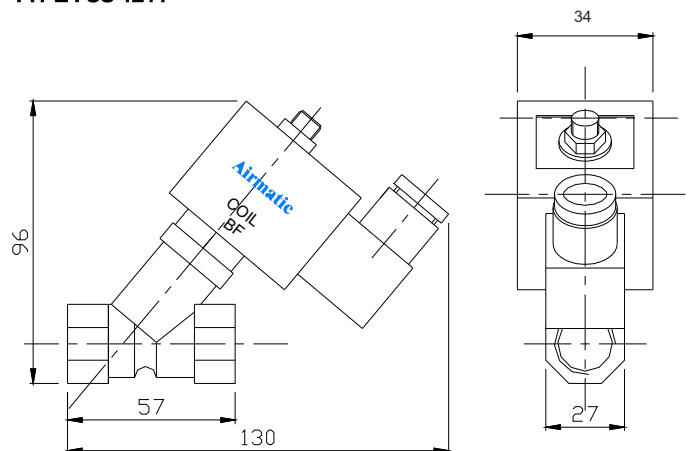
Model Ordering Code Instruction

SS	121Y	- 04	- 003	- B	- N	- B	F	14	- PB	- 220V	AC
Single Solenoid	Y-Angle Type	Blank - BSP Range	Pressure Range	Body Material	Seal Material	Coil Type	Class	Plug Type	Coil Voltage	AC	DC
1-Direct Operated	N	NPT	003-3	B-Brass	N-Nitrile	B	F - F class	PB-Standard	220V		
2-2/2 Way	1-NC	03-G3/8	Kg/Cm ²	S-SS304	V-Viton	14W			110V		
	04-G1/2			S-Silicon	S-Silicon	8W			24V		
									12V		

ORDER CODE : SS 121Y-04-003-B-N-BF14-PB-220VAC

Dimensions

TYPE : SS 121Y



DIMENSIONS ARE IN MM

Shah Pneumatics

Regd. Office : 28-30, Navketan Industrial Estate, Mahakali Caves Road, Andheri (East),

Mumbai - 400 093, INDIA.

Phone : +91-22-6695 1090 Fax : +91-22-26875317

E-mail : shahpneu@bom3.vsnl.net.in

Website : www.shah-pneumatics.com