

SOLENOID VALVES

2/2 PILOT OPERATED - PLASTIC

TYPE : SS221PLS - STRAIGHT

SS221PLA - ANGLE

SOLENOID OPERATED SPRING RETURN VALVE FOR WATER APPLICATION

Application

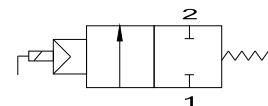
Airmatic plastic solenoid valves are diaphragm operated & suitable for use in Water Purifiers, Washing Machines, Industrial Washers, Dish Washers, Vending Machines & Soft Drink Dispensers. Valves are available in single or multiple outputs. As per the requirements medium can be Hot/Cold Water, Beverages, Areated water, juice & Waste water.



Port Sizes IN/OUT/Gang	Orifice in mm	Flow Lpm Qn(Nlit/Min)	Admissible Pressure Range (Kg/cm ²)	Max. Admissible Temperature °C	Power Consumption		Model/Ref. No		
					DC Watts	AC VA	Type	Valve #	Coil Voltage

MODEL : SS 221PLS

Plastic Body



G3/4/8mm Hose x1	7.5	16	0.2-10	10-60	2.5	6	Angle	SS 221PLA-06-1	220 VAC
G3/4/8mm Hose x1	7.5	16					Straight	SS221PLS-06-1	12 VDC

Please Contact Technical Sales For Other Variants.

Material Specification

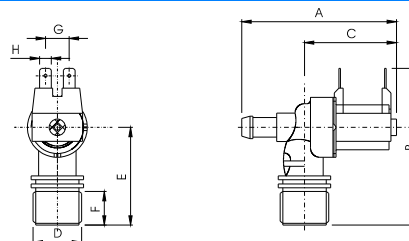
Body	Plastic
Internal	Piston : Plastic, Spring : SS 304
Seals	Nitrile
Coil	Nylon Encapsulated
Coil Frame	Zinc Coated Steel

Technical Specifications

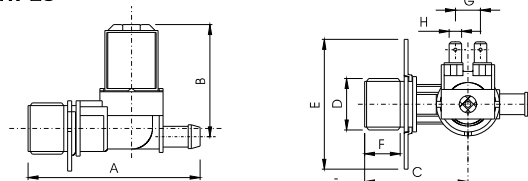
Voltage Fluctuation	+10% / -15%
Electrical Connection	Quick Connecting 6.35 x 0.8 tabs
Duty Cycle/ Insulation	100% ED/ Class F std.
Degree of Protection	IP 65

Dimensions

TYPE : SS 221PLA



TYPE : SS 221PLS



SIZE IN/OUT	Type	DIMENSIONS							
		B	C	D	E	F	G	H	
(G3/4)/8MM	PLA	86.5	71	52	G3/4	45	18	13	6.3
HOSE	PLS	87	56.7	52.3	G3/4	65.7	18	12.5	6.3

DIMENSIONS ARE IN MM

Shah Pneumatics

Regd. Office : 28-30, Navketan Industrial Estate,
Mahakali Caves Road, Andheri (East),
Mumbai - 400 093, INDIA.
Phone : +91-22-6695 1090 Fax : +91-22-26875317
E-mail : shahpneu@bom3.vsnl.net.in
Website : www.shah-pneumatics.com

Model Ordering Code Instruction

SS 221	-	PLS	-	06	-	3	-	010	-	P	-	N	-	220V	-	AC
Single Solenoid		1-NC		Size 06-G3/4 Male		No of outputs 1-1 nos.		Pressure Range 010-0-10 kg/cm ²		Seals N-Nitrile		Coil Voltage 220V		110V		DC
2-Pilot Operated		PLS-Straight Type				2-2 nos.		Body Material P - Plastic				24V		12V		
2-2/2 Way		PLA-Angle Type				3-3 nos.										

ORDER CODE : SS221PLS-06-3-010-P-N-220VAC