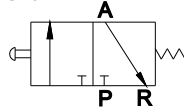


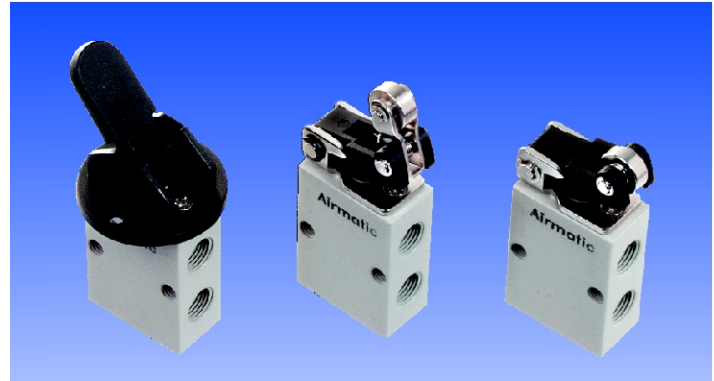
MECHANICAL VALVES

MINIATURE SERIES 3/2 WAY

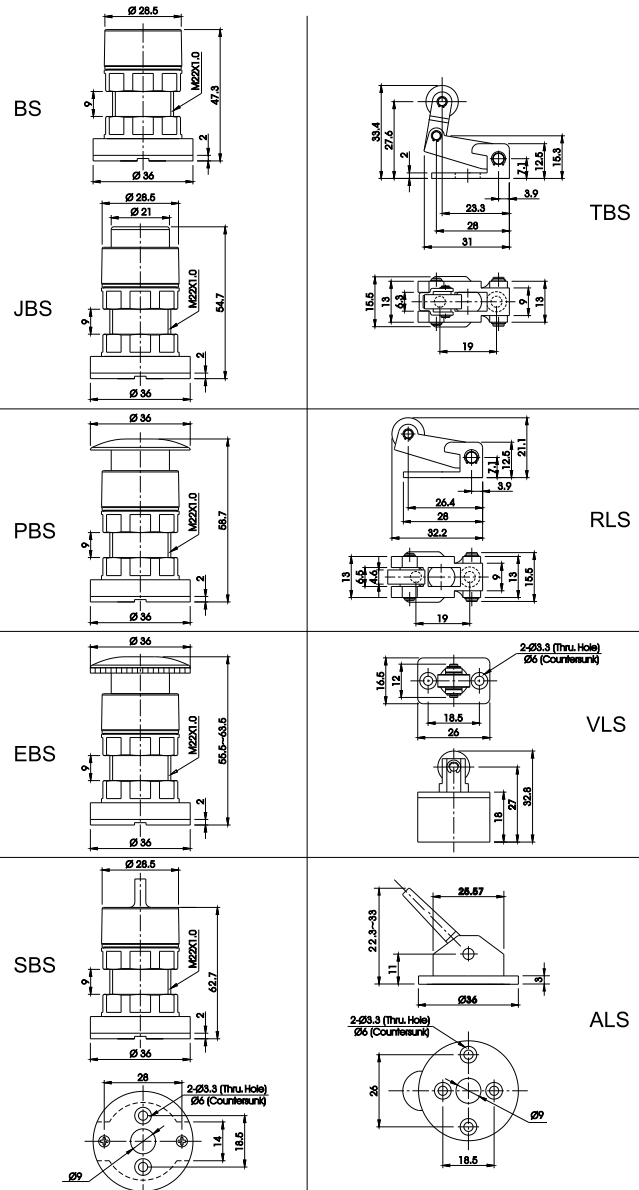
- VS - Plunger Operated (Basic)
- BS - Push Button (Flat)
- JBS - Push Button (Proj.)
- PBS - Push Button (Mushroom)
- EBS - Push Button (Latch)
- SBS - Rotary Selector Knob
- TBS - Toggle Switch
- RLS - Roller Operated
- ALS - Roller Lever
- VLS - Cam Operated



Airmatic



Dimensions



ALL DIMENSIONS ARE IN MM

Shah Pneumatics

Regd. Office : 28-30, Navketan Industrial Estate,
Mahakali Caves Road, Andheri (East),
Mumbai - 400 093, INDIA.
Phone : +91-22-6695 1090 Fax : +91-22-26875317
E-mail : shahpneu@bom3.vsnl.net.in
Website : www.shah-pneumatics.com

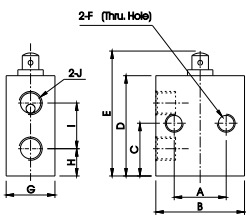
MECHANICAL VALVES

TYPES	SIZES		
	M5	G1/8	G1/4
	MODELS		
Basic	VS131-M5	VS131-01	VS131-02
Push Button Flat	BS131-M5	BS131-01	BS131-02
Push Button Proj.	JBS131-M5	JBS131-01	JBS131-02
Push Button Mushroom	PBS131-M5	PBS131-01	PBS131-02
Push Button Latch	EBS131-M5	EBS131-01	EBS131-02
Rotary Selector Knob	SBS131-M5	SBS131-01	SBS131-02
Toggle Switch	TBS131-M5	TBS131-01	TBS131-02
Roller Operated	RLS131-M5	RLS131-01	RLS131-02
Roller Lever	ALS131-M5	ALS131-01	ALS131-02
Cam Operated	VLS131-M5	VLS131-01	VLS131-02

Condition of use Specifications

Fluid	Air
Action	Direct Acting
Pressure Range Kg/cm ²	0 - 8
Temperature Range °C	0 - 60
Lubrication	Non Lubricated Air

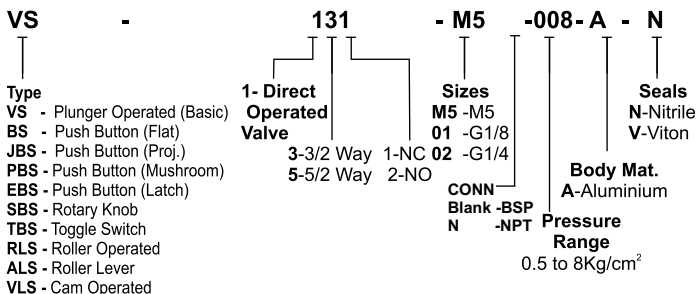
Dimensions



B-BASIC

(Type / Item)	M5 (Type)	G1/8 (Type)	G1/4 (Type)
A	18	20	24
B	26	27	34
C	16	19.5	22.3
D	30	41	44
E	36	47	50
F	M5X0.8	M5X0.8	M5X0.8
G	16.5	18	17.5
H	9	11	12
I	13.5	17	21
J	M5X0.8	G1/8	G1/4

Model Ordering Code Instruction



ORDER CODE : VS131-01 -008-A-N