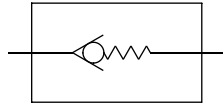


# NON RETURN VALVES

**MODEL :- NRV**

**SERVICE :- COMPRESSED AIR AND GASES**



# Airmatic



## Condition of use

Max. Supply Pressure	17 Kg/cm <sup>2</sup>	
Temp. Range	0 - 80° C Standard, Nitrile	Suffix-N
	0 - 140° C Silicon	Suffix-S
	0 - 140° C Viton	Suffix-V

High Pressure Valves available on request.

## Model Ordering Code Instruction

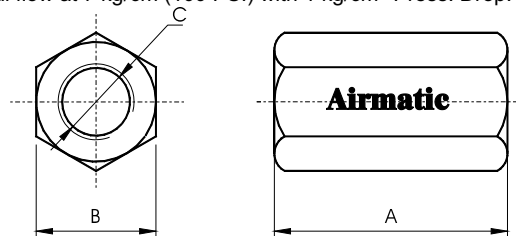
NRV - 02 - P - A - N  
 T Conn T Body Const. T Seals  
 NRV - Non Return Valve Sizes 01-G1/8 02-G1/4 03-G3/8 04-G1/2 06-G3/4 08-G1  
 Blank - BSP -NPT  
 Max. Pressure P - 10Kg/cm<sup>2</sup> P1 - 35Kg/cm<sup>2</sup> P2 - 70Kg/cm<sup>2</sup>  
 A-Aluminium B-Brass S-St. Steel 304 SS-St. Steel 316  
 N-Nitrile V-Viton S-Silicon

ORDER CODE - NRV - 04 - P - A - N

## Dimensions & Weights

SIZES - [C]	FLOW		DIMENSIONS - MM	
	SCFM	LPM	A	B
G1/8	40	1130	40	14
G1/4	70	1980	50	17
G3/8	80	2265	50	21
G1/2	120	3400	46	26
G3/4	140	3965	90	36
G1	200	5000	105	45

Typical flow at 7 kg/cm<sup>2</sup> (100 PSI) with 1 kg/cm<sup>2</sup> Press. Drop.



## Shah Pneumatics

Regd. Office : 28-30, Navketan Industrial Estate,  
 Mahakali Caves Road, Andheri (East),  
 Mumbai - 400 093, INDIA.  
 Phone : +91-22-6695 1090 Fax : +91-22-26875317  
 E-mail : shahpneu@bom3.vsnl.net.in  
 Website : www.shah-pneumatics.com

NON RETURN VALVE CAT.

## Application

Airmatic's new, compact, slimline check valve has a very low operating pressure and low differential for closing even at high operating pressures. The unit locks effectively in reverse directions at pressure differential as low as 0.1 Kg/cm<sup>2</sup>. The unit is equally efficient in operation while handling gases or fluids; under pressure or vacuum. Symmetrical configuration of components ensures concentricity of the sealing ring with respect to fluid path and also offers least resistance to the flow.

These valves are self aligning unit and hence can be mounted, fitted in any position. However vertical upward flow of fluid is most desirable. In this case sealing against flow reversal is the quickest.

## Technical Data

### Material Specification

Body	Aluminium Powder Coated / Brass / St. Steel 304
Poppet	Aluminium / St. Steel 304 Optional
Spring	St. Steel 304
Sealing	Nitrile Rubber, Viton & Silicon on request

### Ordering Reference

SIZES	MODELS			
	ALUMINIUM	BRASS	ST. STEEL	
			304	316
G1/8	NRV-01A	NRV-01B	NRV-01S	NRV-01SS
G1/4	NRV-02A	NRV-02B	NRV-02S	NRV-02SS
G3/8	NRV-03A	NRV-03B	NRV-03S	NRV-03SS
G1/2	NRV-04A	NRV-04B	NRV-04S	NRV-04SS
G3/4	NRV-06A	NRV-06B	NRV-06S	NRV-06SS
G1	NRV-08A	NRV-08B	NRV-08S	NRV-08SS

Higher sizes available on request.

### Features \* \* \* \* \*

- Compact
- Operating or closing requires low differential pressure even at high operating pressures.
- Special design ensures sealing ring concentricity and least resistance to fluid flow.
- Effective seating at low reverse pressure.

### Applications

- 1) Handles gases or liquids under pressure or vacuum.
- 2) Recommended for use when pumping hazardous gases in to large storage tanks.
- 3) Maintains the direction of flow of general - purpose fluids at high pressures.