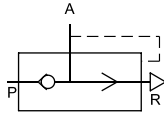


QUICK EXHAUST VALVES

MODEL :- QEV

SERVICE :- COMPRESSED AIR AND GASES



Application

Designed to increase piston speed by providing immediate outlet to atmosphere of the air exhausted from a cylinder. Exhausting air in this way is capable of increasing cylinder speeds about two times. The valve is mounted on the cylinder port and may be fitted with a silencer if required to reduce the discharge noise.

The long life balance piston is sensitive, permitting extremely low operating differential.

This uniquely constructed valve, with its low pressure actuation and high flow capacity, offers versatile application potentials like -

- a) Conventional Quick Exhaust Application.
- b) Constant Pressure Application.
- c) Check Valve Application.
- d) Dual Pressure Application.

Technical Data

Material specification

Body	Aluminium / Brass Optional
Piston	Rubber / Aluminium
Seal	Nitrile Rubber

Ordering References

SIZES	MODELS		FLOW Lit / Min
	*Aluminium	Brass	
G1/8	QEV-01-A	QEV-01-B	600
G1/4	QEV-02-A	QEV-02-B	1450
G3/8	QEV-03-A	QEV-03-B	1450
G1/2	QEV-04-A	QEV-04-B	3000

Suffix-B For Brass Body (Eg. REV-**-B)

* Unless otherwise specified standard Aluminium body valve will be supplied

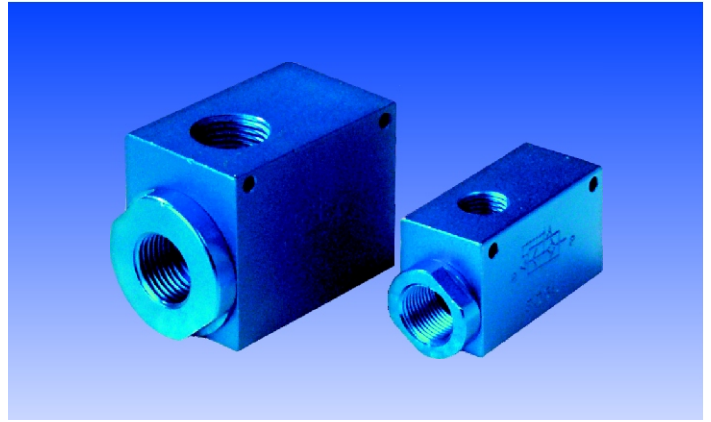
Features

- Aluminium rugged body for air optional brass body for water applications.
- Large piston provides exceptional performance particularly under low pressure.
- Easy maintenance.
- Full flow exhaust ports.

Service Kits

SIZES	G1/8	G1/4	G3/8	G1/2
Service Kit	QEV1-O	QEV2-O	QEV3-O	QEV4-O

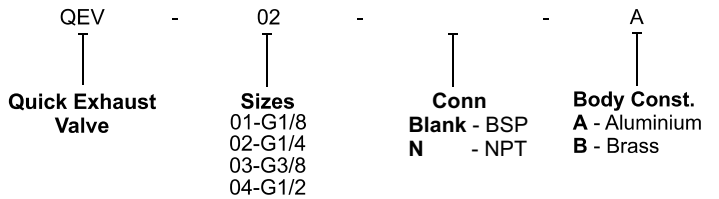
Airmatic



Condition of use

Max. Supply Pressure Range	1-12Kg/cm ²
Max. Op. Temp.	70° C.

Model Ordering Code Instruction

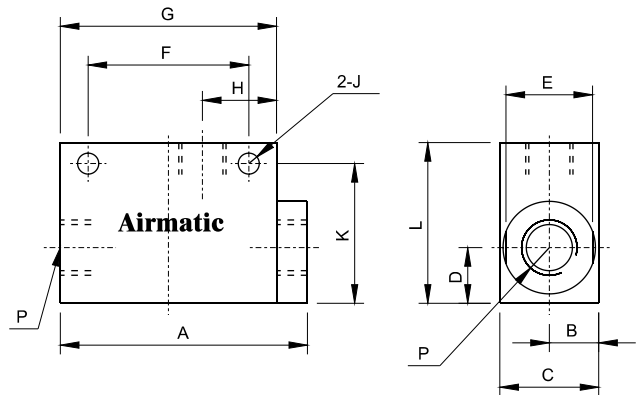


ORDER CODE : QEV - 02 - A

Dimensions

MODELS	SIZES	DIMENSION - MM										
		A	B	C	D	E	F	G	H	J	K	L
QEV-01	G1/8	40	8	16	9	14	26	35	12	3.4	23	26
QEV-02	G1/4	62	13	26	12	22	45	55	19	4	30	34
QEV-03	G3/8	62	13	26	12	22	45	55	19	4	30	34
QEV-04	G1/2	69	20	40	20	36	51	62	20	4	46	50

ALL DIMENSIONS ARE IN MM.



Shah Pneumatics

Regd. Office : 28-30, Navketan Industrial Estate,
Mahakali Caves Road, Andheri (East),
Mumbai - 400 093, INDIA.
Phone : +91-22-6695 1090 Fax : +91-22-26875317
E-mail : shahpneu@bom3.vsnl.net.in
Website : www.shah-pneumatics.com

QUICK EXHAUST VALVES CAT.