

SOLENOID VALVES

2/2 DIRECT OPERATED

TYPE : 121/121A/121X

FOR STEAM / HOT WATER

Application

These Solenoid valves are directly installed in steam iron as the switch of steam supply.

Direct acting structure, good sealing, water proof & reliable.

Adjustable steam flow model available on request.

Airmatic



Model No.	Port Size	Orifice in mm	Maximum working pressure(Kg/cm ²)	Maximum working temperature of fluid Range °C	Type	Seat Material
-----------	-----------	---------------	---	---	------	---------------

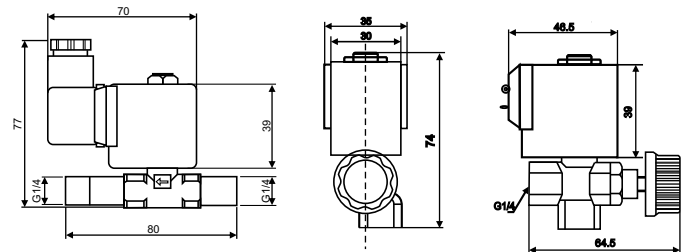
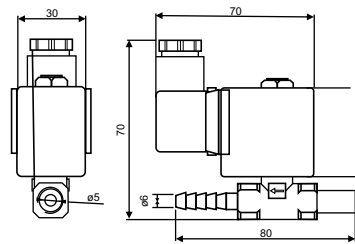
MODEL : 121/121A/121X Normally Closed

Brass Body/Pipe Mounted

Model No.	Port Size	Orifice in mm	Maximum working pressure(Kg/cm ²)	Maximum working temperature of fluid Range °C	Type	Seat Material
SS121-02	G 1/4	2.5	0 - 8	-0.2 to 180°C	Direct Acting	PTFE
SS121-A-02	G 1/4	0 - 2.5 (adj)	0 - 8			SILICON
SS121-X-M8	M8 × 0.75	0.8	0 - 3			
SS121-X-M10	M10 × 1	1.0	0 - 3			

Dimensions

TYPE : 121/121A/121X



DIMENSIONS ARE IN MM

Technical Specifications

Body	Brass
Armature	St. Steel
Seals	PTFE

Model Ordering Code Instruction

SS	1	2	1	A	-	01	-	003	-	B	-	T	-	D	F	8	-	PD	-	230	AC	
SS-Single Solenoid	2-2/2 way	1-NC	Size M8 M10 M10	003-Pressure 0.3 kg/cm ² 0.4 kg/cm ²	Body Material B-Brass	Seat PTFE	Coil Type D	Coil Class	8-Watts	PLUG type PWB-Lead	Coil Voltage 230V	AC DC										
	1-Direct Operated		A- Adj. Flow X- Direct Mount	01 - 0.18 02 - 0.14																		

ORDER CODE : SS 121-A-01-003-B-T-DF8-PD-230AC.

Shah Pneumatics

Regd. Office : 28-30, Navketan Industrial Estate, Mahakali Caves Road, Andheri (East), Mumbai - 400 093, INDIA.

Phone : +91-22-6695 1090-94 Fax: +91-22-2687 5317

E-mail : shahpneu@bom3.vsnl.net.in

Website : www.shah-pneumatics.com