

Booster Pump Systems Horizontal Type - Single Inverter PID Control PP - YS Series

Applications

- Water supply for small size villas and top floors of apartments
- General housings and small commercial buildings where pressurization is necessary
- Mansions, Motels and Schools having shortage in water pressure
- Small size sprinkling system & water treatment facility

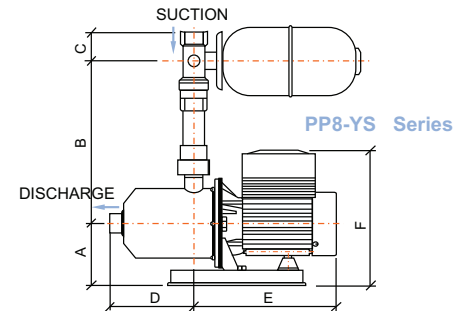
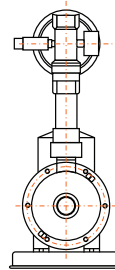
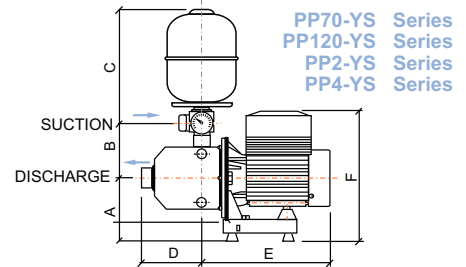
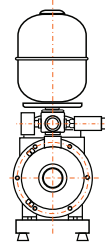
Specifications

Maximum Discharge flow	12 m ³ /hr		
Total Pump Head	65 m		
Maximum Ambient Temperature	+40°C		
Working Temperature Range	-15°C ~ +80 C		
Power Rating: Input / Output	220V 50Hz Ø 3 220/415V 50Hz		
Pump Material	Casing	Impeller	Shaft
	SS 304		
Sealing Device	Mechanical Seal		

Features

- Saves large energy cost and maintains perfect constant pressure with the help of PID control, which is built in the inverter
- Starts & stops by inverter control, reducing pump noise & vibration
- Low water level auto detection & various pump protection functions
- Pump is completely made of SS304, always supplying clean water

Outline Diagrams



Performance Data & Dimensions

Model	Power		Flow (m ³ /hr)	Head (m)	Diameter (mm)		Dimensions (mm)						Weight Kg.
	KW	HP			Suction	Discharge	A	B	C	D	E	F	
PP2-30YS	0.55	0.75	0.5 ~ 3.5	26 ~ 16	25(G1")	25(G1")	133	115	340	130	277	274	11
PP2-40YS	0.55	0.75	0.5 ~ 3.5	35 ~ 21	25(G1")	25(G1")	133	115	340	130	277	274	12
PP2-50YS	0.55	0.75	0.5 ~ 3.5	44 ~ 26	25(G1")	25(G1")	133	115	340	130	277	274	12
PP2-60YS	0.75	1.00	0.5 ~ 3.5	53 ~ 30	25(G1")	25(G1")	133	115	340	130	277	274	13
PP4-20YS	0.55	0.75	1.0 ~ 7.0	18 ~ 11	32(G1¼")	25(G1")	133	115	340	76	277	274	9
PP4-30YS	0.75	1.00	1.0 ~ 7.0	27 ~ 17.5	32(G1¼")	25(G1")	133	115	340	130	277	274	10
PP4-40YS	0.75	1.00	1.0 ~ 7.0	36 ~ 23	32(G1¼")	25(G1")	133	15	340	130	333	274	11
PP8-20YS	0.75	1.00	5.0 ~ 12	19 ~ 11	38(G1½")	38(G1½")	150	365	55	137	333	312	15
PP8-30YS	1.10	1.50	5.0 ~ 12	28 ~ 16	38(G1½")	38(G1½")	150	365	55	137	339	312	18
PP8-40YS	1.50	2.00	5.0 ~ 12	37 ~ 21	38(G1½")	38(G1½")	150	365	55	197	339	312	22
PP70YS	1.10	1.50	1.2 ~ 7.2	33 ~ 27	32(G1¼")	25(G1")	165	158	340	87	329	327	22
PP120YS	1.85	2.50	2.4 ~ 10.8	37 ~ 25	32(G1¼")	25(G1")	165	158	340	52	332	327	20

Performance Curves

Water test temp: °20 C Performance Limits: ISO2548td Class C pumps

