

## Horizontal Stainless Steel Self-Priming Jet Pumps

### PZ Series

#### Applications

- ◆ Domestic & Industrial Application
- ◆ Car Washing
- ◆ Tanks Emptying
- ◆ Gardening
- ◆ Fountains
- ◆ Small Irrigation



PZ Series

#### Working Conditions

Transporting medium	Clean, thin, non-explosive fluids
Max working Pressure	6 kg/cm <sup>2</sup> g
Max ambient Temperature	+40°C
Max working Temperature	+45°C
Max Suction Head	8 m
Pump can be used at full load without overloading motor	

#### Materials of Construction

Casing & back cover	SS304
Impeller	PZ- Reinforced Plastic, PZB- SS304
Diffuser & guide plate	Reinforced Plastic
Mechanical Seal	NBR/Ceramic/Carbon
Sleeve sealing	NBR O-rings
Pump shaft	SS304
Special mechanical seal	Available on request

#### Features

- ◆ CE approved
- ◆ High quality
- ◆ Performance ISO 2548 (20 C)
- ◆ High reliability
- ◆ Ease in operation
- ◆ Unique in design
- ◆ Energy efficient

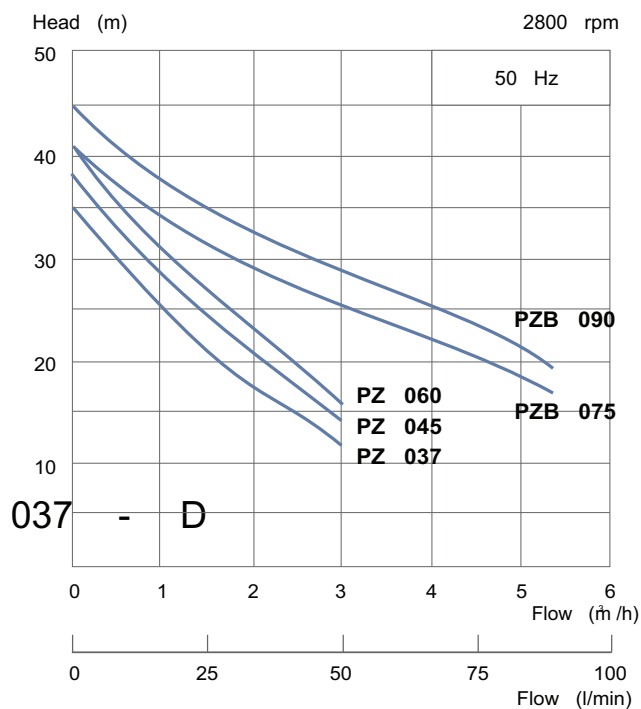
#### Model Ordering Code Instruction

PZ	-	B	-	
⊥	⊥	⊥	⊥	
<b>Series</b>	<b>Impeller</b>	<b>Motor</b>	<b>Power</b>	<b>Phase</b>
PZ -Self priming Centrifugal Jet Pump	B - St. Steel Blank- Reinforced Plastic	037 - 0.37 kW 045 - 0.45 kW 060 - 0.60 kW 075 - 0.75 kW 090 - 0.90 kW	D	Single - Blank - Three

#### Motor Specifications

Type	T.E.F.C - 2 Pole
Speed	2800 rpm
Frequency	50 Hz
Single Phase Voltage	220 V±5%
Three Phase Voltage	415 V±5%
Insulation Class	F
Protection Class	IP55
Duty	Continuous
Motor Case	Aluminum
Altitude	≤1000 m

#### Performance Curves

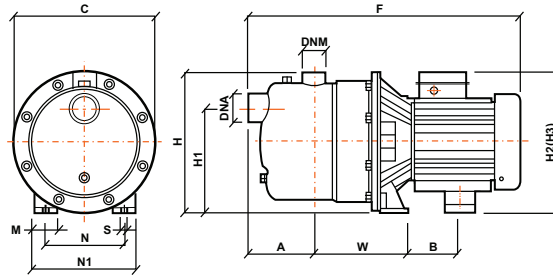




## Horizontal Stainless Steel Self-Priming Jet Pumps

### PZ Series

#### Outline Diagram



#### Dimensions

Model	Dimensions (mm)														Weight Kg.	
	A	B	C	F	H	H1	H2*	H3*	M	N	N1	S	W	DNA		DNM
PZP37D	90	82	170	380	128	128	182	181	30	100	130	7	107	25(G1")	25(G1")	5.6
PZO45D	90	82	170	380	128	128	182	181	30	100	130	7	107	25(G1")	25(G1")	6.5
PZO60D	90	97	170	398	128	128	188	188	30	100	130	7	107	25(G1")	25(G1")	8.1
PZB075D	100.5	82	213	428	158	158	213	213	39	120	158	9	142	32(G1¼")	25(G1")	10.5
PZB090D	100.5	82	213	428	158	158	213	213	39	120	158	9	142	32(G1¼")	25(G1")	11.8

NOTE: H2 : For Single Phase motors  
H3 : For Three Phase motors  
For 3 phase input voltage, remove (D) in Model code  
Dimensions same for pumps with st. steel or reinforced plastic impeller

#### Performance Data

Model		Power		Flow Capacity (m <sup>3</sup> /hr)	Suction Head (m)	Suction Size mm (BSPF)	Discharge Size mm (BSPF)	Flow											
Single Phase 220 V	Three Phase 415 V	kW	HP					l/min											
								0	10	20	30	40	50	60	70	80	90		
PZ037D	PZ037	0.37	0.5	0~3	8	25(1")	25(1")	m <sup>3</sup> /hr											
PZ045D	PZ045	0.45	0.6	0~3	8	25(1")	25(1")	0	0.6	1.2	1.8	2.4	3.0	3.6	4.2	4.8	5.4	Head	
PZ060D	PZ060	0.60	0.8	0~3	8	25(1")	25(1")	m											
PZB075D	PZB075	0.75	1.0	0~5.4	8	32(1¼")	25(1")	35	28	23	18	15	12	-	-	-	-	-	
PZB090D	PZB090	0.90	1.2	0~5.4	8	32(1¼")	25(1")	38	32	26	22	17	14	-	-	-	-	-	
								41	35	29	24	20	16	-	-	-	-	-	
								41	36	33	29	28	25	23	21	19	17	-	
								45	40	36	33	31	28	26	25	23	21	-	

Water test temp: ° 20 C

Performance Limits: ISO2548

Std Class C pu

# WATER

# MANAGEMENT

## Shah Pneumatics

Regd. Office: 28-30 Navketan Indl. Estate, Mahakali Caves Road,  
Andheri ( East ), Mumbai- 400 093. INDIA.  
Telephone: +91-22-6695 1090-94. Facsimile: +91-22-2687 5317  
Email: shahpneu@bom3.vsnl.net.in  
Website: www.shah-pneumatics.com

FOR DISTRIBUTOR STAMP